

3CH Real HDR Blackbox

GTX *Premium*

3CH QHD/FHD/FHD DASH CAM

Quick User Guide rev01

This manual includes the basic information required in order to set up and operate the GTX Premium. For more details including all other official user manuals for GTX Premium product, please visit the GNET SYSTEM's website at: <https://www.gnetsystem.com/eng> → SUPPORT → DOWNLOAD

IMPORTANT SAFETY INSTRUCTIONS WARNING

© 2023 GNET SYSTEM CO.,LTD. or its subsidiaries All rights reserved. Under the copyright laws, this manual may not be copied, in whole or in part, without the written consent of GNET SYSTEM CO.,LTD. GNET SYSTEM CO.,LTD reserves the right to change or improve its products and to make changes in the content of this manual without obligation to notify any person or organization of such changes or improvements. Go to www.gnetsystem.com for current updates and supplemental information concerning the use of this product.

GNET® and the GNET logo, are trademarks of GNET SYSTEM CO.,LTD. or its subsidiaries, registered in South Korea and other countries. GNET G-ON™, are trademarks of GNET SYSTEM CO.,LTD. or its subsidiaries. These trademarks may not be used without the express permission of GNET.

microSD® and the microSD logo are trademarks of SD-3C, LLC. Wi-Fi® is a registered mark of Wi-Fi Alliance Corporation.

- Do not expose the unit to electrical shock or debris.
 - This may cause product damage, fire, or electrical shock.
- Avoid use with excessive vehicle window tints or special auto glass.
 - Images may be blurry or distorted and may cause interference with the reception rate of the GPS.
- Do not modify or dismantle the device/ accessories.
 - We are not responsible for any damage to the device or vehicle due to user tampering.
- Never operate the device or adjust settings while driving.
 - Always keep your eyes on the road.
- Do not use liquids or chemicals to clean the product or accessories.
 - This may cause product damage, fire, or electrical shock.
- Please use a non-scratch lens cloth to clean the product and accessories.
 - Routinely clean camera lens for best results.
- In the absence of the external GPS, the device's date and time may be reset.
 - Please always check that the date/ time is correct.
- When parked for long periods of time in direct sunlight, a temperature increase inside the vehicle may result in a memory card corruption and/ or recognition error.
 - It is recommended to remove the memory card and store it out of direct sunlight during long periods of vehicle inactivity.
- Avoid high temperature or high humidity environment for normal operation of the product.
- Check the operation of the interior camera(S) periodically before driving.
 - Only the front camera will be captured in the event of a malfunction or defect.

CAUTION FOR MEMORY CARD

- **Overtime, memory degradation can occur and should be replaced periodically.**
- To prevent incompatibility problems, please use only a genuine GNET memory card. The GNET memory cards are specifically designed to operate with our GNET systems and are covered under our warranty program.
- When a vehicle accident occurred, it is recommended to remove the memory card from the device and save the data to a computer immediately. When the memory card is full, the data will be overwritten, and the accident data will be lost.
- Please be sure to remove the memory card only after the recording LED is off. Otherwise, if removed too early, video data could be lost or corrupted. This can also shorten the card's lifespan.
- Please do not interchange / swap the memory cards between other products. Data may be erased and lost if the memory card is automatically formatted.
- It is recommended that the memory card be formatted at least twice a month for product and lifespan maintenance. For best results, please use the official SD Formatter (www.sdcard.org).
- GNET System dash cameras can support memory card (SD) capacities ranging from 32GB to 512GB.
- When a new or used memory card is inserted into the device for the first time, the system will go into standby mode for 3 to 5 minutes. Please do not attempt to remove the memory card during standby mode or when the device is formatting the card.
- It is possible to format the memory card in the GNET application for Mac and PC. Please visit the GNET SYSTEM's website at:
<https://www.gnetsystem.com/eng> → SUPPORT → DOWNLOAD

PRODUCT COMPONENTS

Basic Components



Front/Inner/Rear Camera
(Including a bracket)



Power cable



Rear cam
connection cable



Inner cam
connection cable



Micro SD
memory card

Optional Products



Cigarette lighter
power cable



External GPS



Wi-Fi dongle



CWC



Please make sure that all of the above product components are included.

(Cigarette Lighter Power cable, External GPS, Wi-Fi Dongle, and CWC are each sold separately)

- ※ The size and appearance of the components depicted above may be different from the real components.
- ※ Specifications and components may be changed without notice for quality assurance.
- ※ We highly recommend that a GNET Genuine SD memory card be used with all GNET products.

NAME OF EACH PART

Front Camera

- ① Front Camera Lens
- ② Security LED
- ③ Front Camera Bracket/Double-sided TAPE
- ④ Bracket Angle Adjusting Screw
- ⑤ 3.5 LCD
- ⑥ GPS LED
- ⑦ REC LED
- ⑧ Power Connector (DC-IN)
- ⑨ CAM2 Connection Port
- ⑩ CAM1 Connection Port
- ⑪ GPS Connection Port
- ⑫ Micro SD Card Slot
- ⑬ Wi-Fi USB Port



CAM1



Rear FHD Camera

CAM2



Inner FHD Camera

SPECIFICATIONS

Image sensor	QHD SONY STARVIS
Audio input	Built-in Microphone
Video Compression	H,265
Audio Compression	ADPCM
Resolution	Front : QHD (2560x1440P) / CAM1, CAM2 FHD (1920x1080P)
Frame Rate	All cameras Max 30 FPS
Wi-Fi	Registration standby mode
G-Sensor	Event recording by External Shock
Speaker	Operation Status alarm / Voice guidance
External GPS	Synchronize with Google map, Keep track of the location and Speed
Angle Of View	Front : 150° / Inner, Rear : 140°
Viewer	Windows 7/8/10/64Bit In order to use Google map, WebView2 Runtime is required Synchronizing Google map with PC viewer is supported over Windows7 and Explorer 10 as per Google's policy. Please download GNET viewer from the APP store about Mac viewer.
Power	DC 12V ~ 24V
Allowable current of providing fuse	3A
Operation Temperature	-10°C ~ 60°C (Storage: -20°C ~ 80°C)
Humidity	10~95%
LCD (Touch)	480x320 LCD touch panel

※ Specifications and components are subject to change without notice for quality assurance.

Estimate recording time by capacity of SD Card

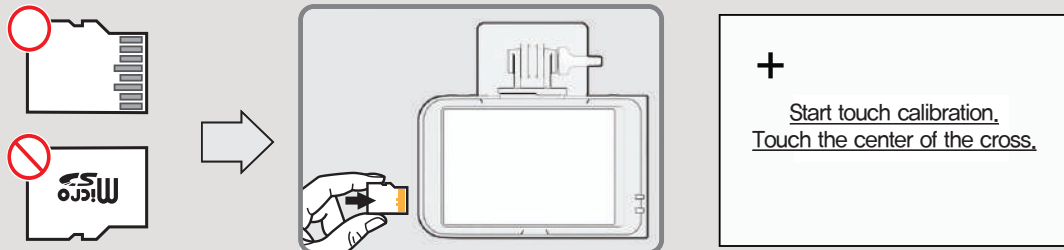
32GB (2hours 20minutes), 64GB (4hours 10minutes), 128GB (9hours 20minutes),
256GB (18hours 40minutes), 512GB (37hours 40minutes)

* This is an approximate recording time and may vary depending on the driving environment.

INSTALLATION

Inserting the Memory Card

! Please be fully aware of the orientation of the Micro SD Memory Card.

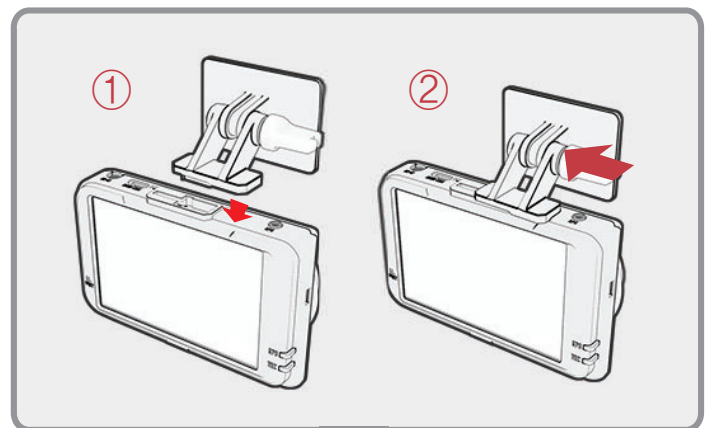


! How to Adjust the touch screen

When you press the screen for 5 seconds, will see the screen as right side picture. Please adjust the touch screen as description on the screen.

HOW TO INSTALL DASH CAM

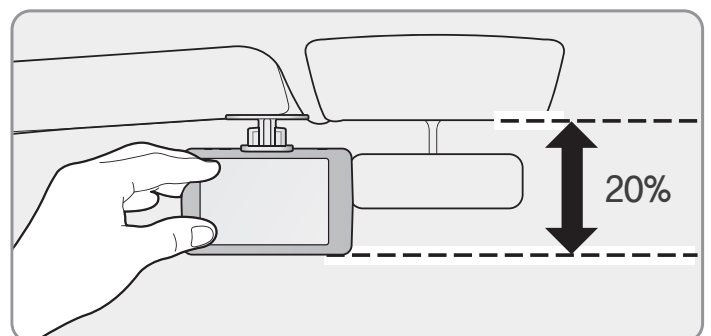
- 1 Assemble the front camera with the provided bracket in the order displayed. Make sure bracket is hooked correctly. Push and align it until a sound is heard. (Remove the bracket in reverse order).



- 2 Peel off the attached double-sided tape from the bracket.

- 3 Install the front camera onto the front windshield of the vehicle making sure the angle and location is properly aligned.

※ Make sure to install the dash cam not to cover the sight of the driver.



4 Depending on the vehicle, the front angle may be different. It is recommend to hold a dash cam vertically based on a regular passenger car.

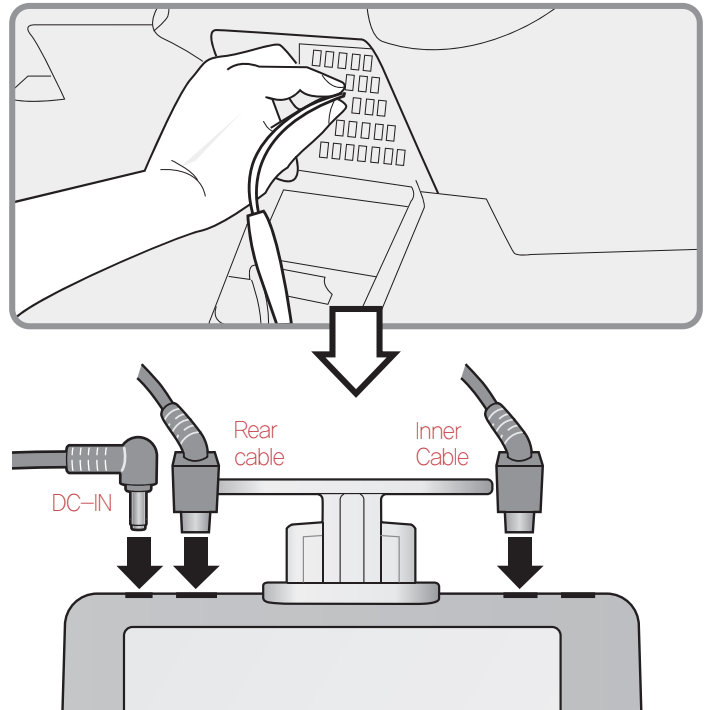
5 Connect the power cable to the fuse box terminal inside the vehicle.
(The connected terminal should be one which is always supplied power even when ACC power is turned off, such as emergency lights and/ or door racks.)

Connect the DC power jack, CAM1, and CAM2 USB cable to the top connection terminal of the dash cam.

※ 2-wire power cable Tie the ACC and VCC lines and connect to the terminal and change the setting to Two wire mode.

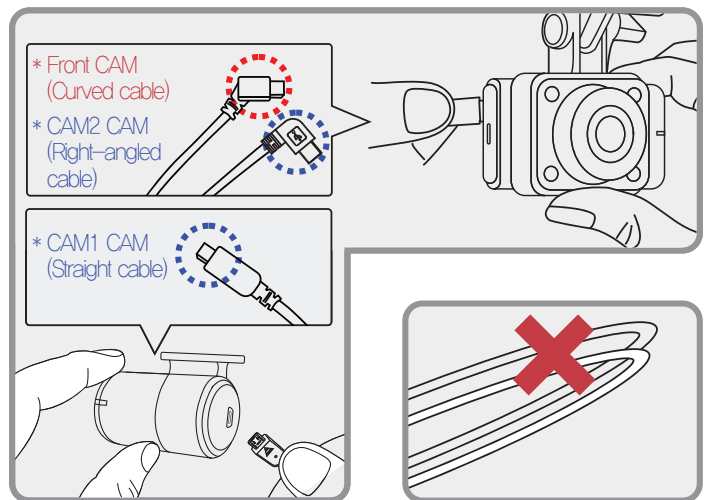
Setting

Setting > Voltage management > LBP > Power line



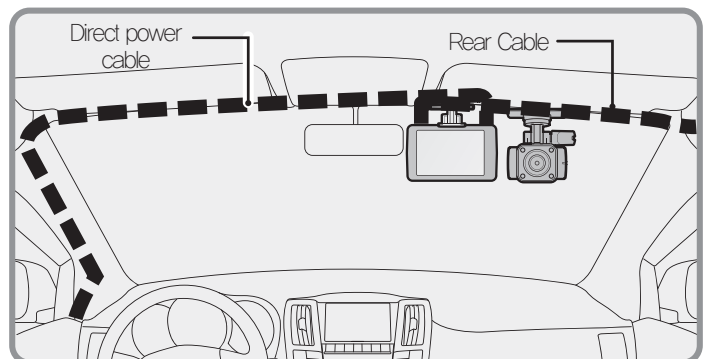
6 Attach the CAM1, CAM2 camera to the windshield of the vehicle and connect the cable from dash cam to the CAM1 and CAM2 camera.

※ When the cable is bent as shown in the picture, the data flow may be interrupted and a recording error may occur. Please be careful.



7 Carefully tuck the power cable into the linings of the vehicle between the ceiling and glass.

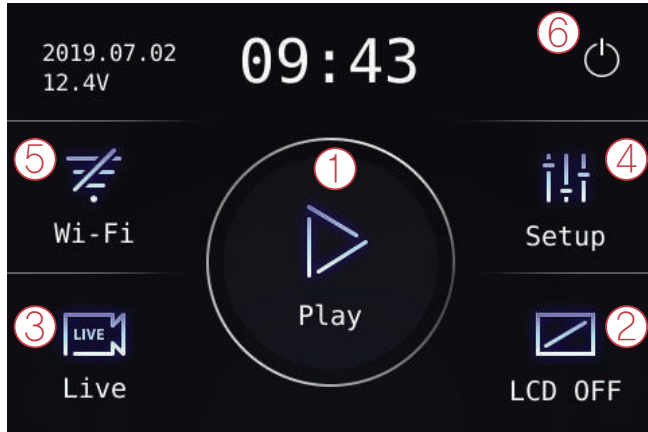
※ GPS reception and terrestrial digital sensitivity may decrease depending on the navigation installed. When installing power cables and rear camera access cables, it is recommended that each cable be installed on the opposite side. For example, install the power cable facing the driver's side and the rear camera access cable facing the opposite seat.



PRODUCT DESCRIPTION

How to operate a product - Main Screen

Once the product is fully powered on, the following screen appears on the LCD with the message "Start recording".



① Play	Play a recorded video back.
② Screen off	Turn the LCD screen off. After the screen goes off, touch the screen again to turn it on.
③ Real-time video	You can play live streaming video
④ Settings	You can set up the dash cam.

⑤ Wi-Fi

When you touch the Wi-Fi button, you will hear the voice "Standby mode for the registration." If there is no connection for 2 minutes, it will be automatically canceled with the voice "Standby mode for the registration is released."



▶ Wi-Fi disconnected



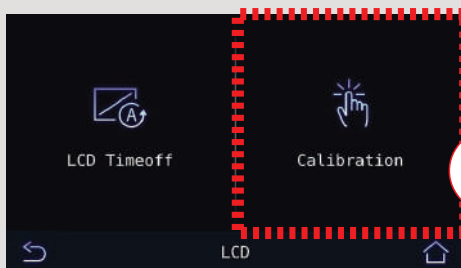
▶ Wi-Fi connected

⑥ Power Off

The system will shut down.

※ When the power button is pressed to end the dash cam, the dash cam will restart when the vehicle is started.

Touch screen calibration



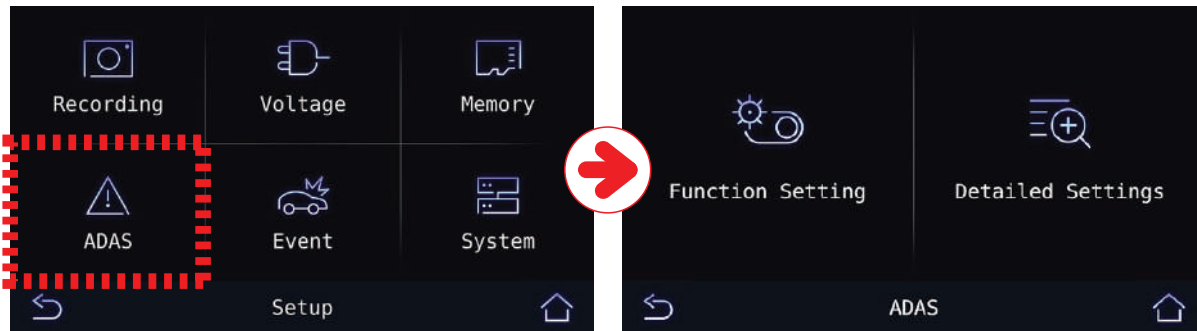
Start touch calibration.
Touch the center of the cross.

If LCD touch screen doesn't work properly, you can adjust the touch sensitivity by filling the blank with green clicking.

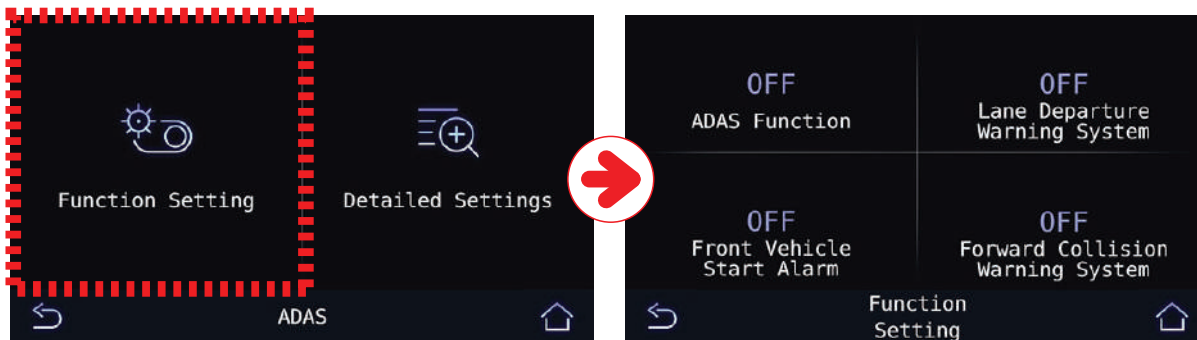
※ Pressing the main screen for 5 seconds will advance to the touch screen calibration screen.

APP Screen description for a recorded video

Touch the ADAS button in the main setting to set up the ADAS function and set the details.



! ADAS settings can only be set after GPS are connected.



① Function Setting

– Able to turn on/off the whole function with ADAS switch button. And when the ADAS function is activated, will able to turn on/off the individual function.



② Detailed setting

– From detail setting of ADAS, will able to set the sensitivity of each function as low, middle, or high. For Lane departure warning can be set as 50km/h, 60km/h, 70km/h and once the speed of car has been increased from the setting, there will be alarm.

In the ADAS detail settings, adjust the sensitivity of lane departure detection and collision detection individually as low, medium, high. The set the lane departure detection speed to 50km/h, 60km/h, 70km/h, so that an alarm will sound when the car exceeds the specified speed.

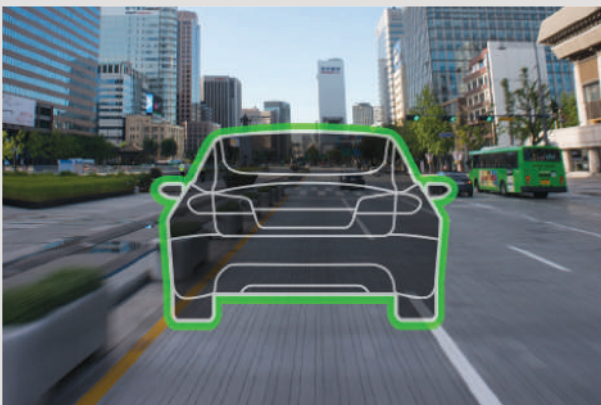
Description of ADAS

! The line detection point, front car departure, and collision warning icons are visible only if the current status of the LCD is a real-time video.

- ※ To increase ADAS recognition, dash cam need to be installed in the middle.
- ※ At night, ADAS recognition function may decrease.



① Lane departure warning system : A function that informs, when the car leave the lane
If a lane is detected while driving, a white dot will be displayed, and if you leave the lane, a red dot will be displayed and the alarm will sound as shown above. However, lane departure detection alerts only operate at speeds above the set speed.



② Car in front departure :
A function that informs the driver that the car in front has departed.

When the distance from the car in front of you increases by more than 2 meters during the stop, it displays the departure icon of the car in front of you with a notification sound on the LCD screen.



③ Collision warning :

A function that informs you when there is a risk of a collision with a car in front of you
A collision warning icon is displayed with a notification alert with below reasons;
Distance between the car in front is short
Speed of the car is fast
Distance between the car in front is rapidly reduced within a short period of time.

PLAYER MENU NAME



- ① Tool Box
- SAVE
 - OPEN FOLDER
 - PRINT
 - SETTING
- ② Google map
GPS and internet connection required.

③ Playlists and Information Display

④ GPS reception window
GPS connection required.

⑤ Video control pop-up

- Thumbnail
- Draw a lane
- View a video
- Split View
- PIP View
- Toggle (Change) color

⑥ G-sensor (acceleration) graph

⑦ Speedometer
External GPS connection required.

⑧ Play a recorded video

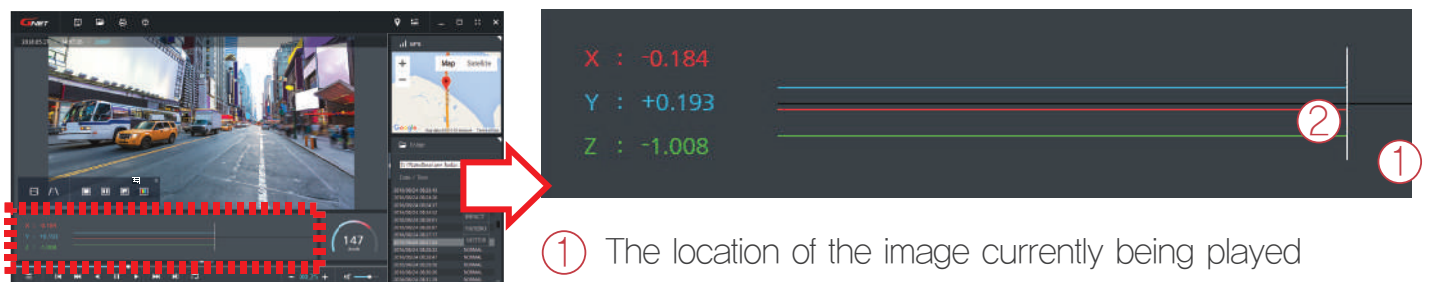
- Forward play
- Pause
- Repeat event video
- Previous, Next Event
- Rewind 1 Second
- Play frame by frame

⑨ Adjust playback speed ⑩ Sound control

• The color adjustment panel function is only available in HW mode.

How to check G-Sensor data

⟨Magnification of G-sensor data⟩



① The location of the image currently being played

② Numerical values and graphs of three-dimensional coordinate system information (G-sensor data)

When you play the video, three-dimensional coordinate system information (G-sensor data) on the X-axis (progress direction), Y-axis (left-right), and Z-axis (height) of the image currently being played at the G-sensor data location is output.

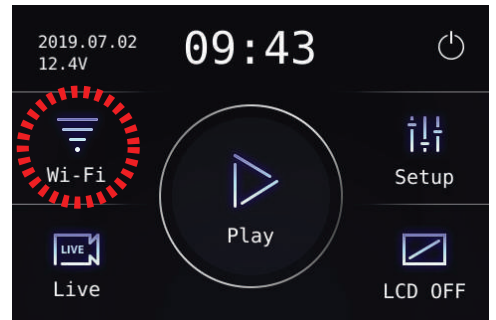
SMART PHONE CONNECTION

How to connect an Android

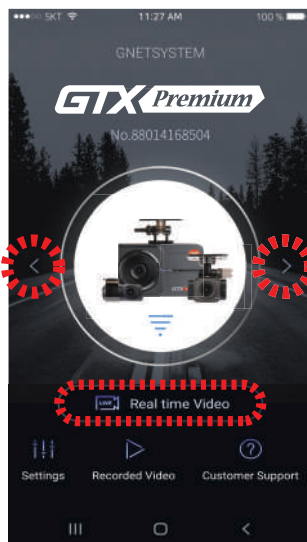
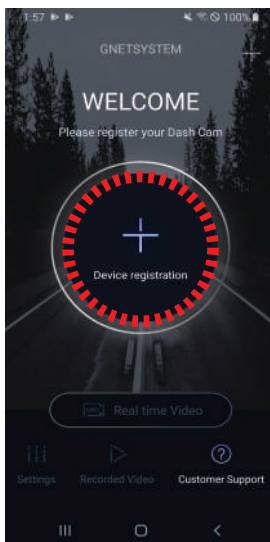


1 Install the GNET application on the mobile phone.

2 Touch the Wi-Fi button on the dash camera to enter standby mode with the voice message "Registration standby mode" (last 2 minutes)

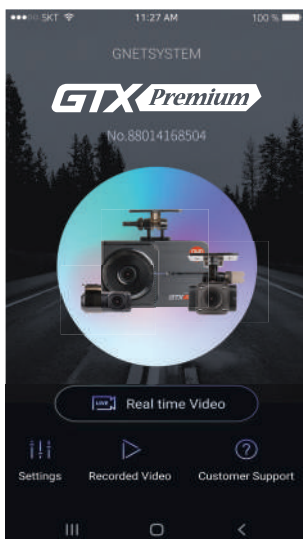


3 Touch the registration button to search for the dash camera.



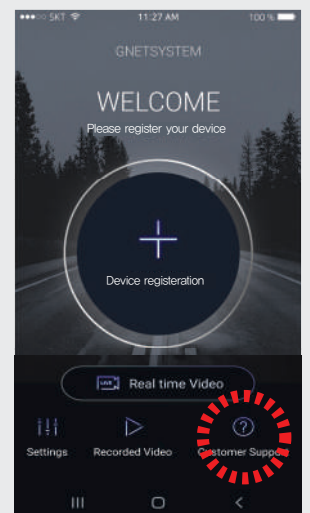
Touch the "+" button to search for the dash camera, then use the left and right arrows to select your dash camera and touch "Connection" on the screen

4 The registration of the dash camera is completed.



Failure of connection

Press the Customer support button of GNET App on your mobile phone.

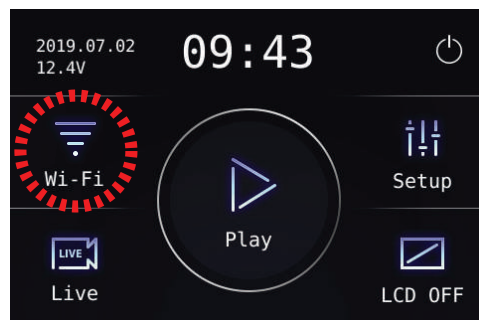


How to connect an IOS

- 1 After Install the GNET application on the mobile phone, run on mobile phone.

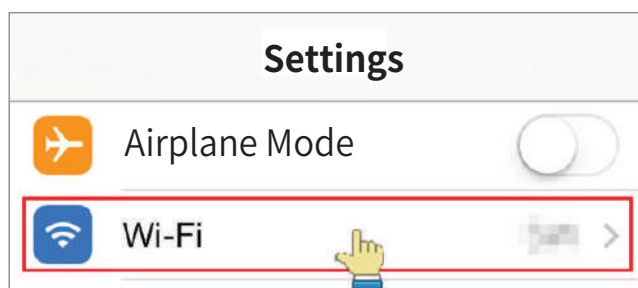


- 2 Touch the Wi-Fi button on the dash camera to enter standby mode with the voice message "Registration standby mode" (last 2 minutes)

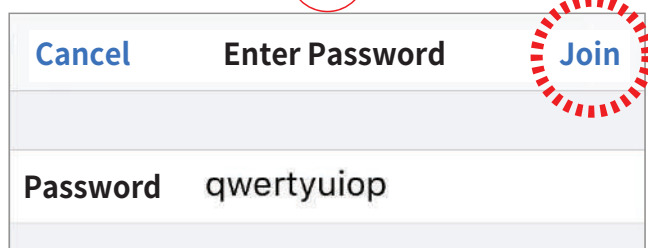
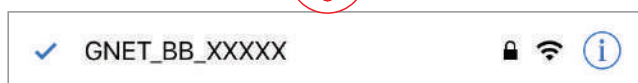


- 3 Turn on the Wi-Fi from mobile phone

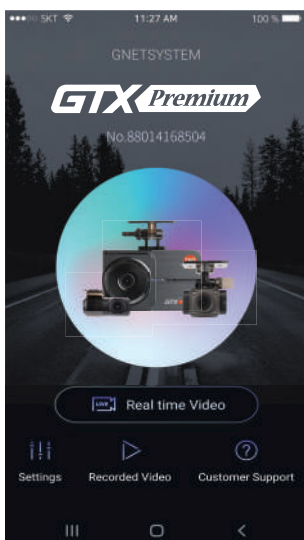
- 4 Connect to the dash camera's Wi-Fi network (begins with GNET_BB_)



- 5 Enter the password [qwertyuiop] and press connect button

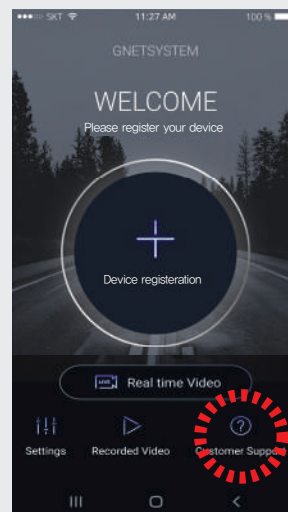


- 6 The registration of the dash camera is completed, available the GNET application.

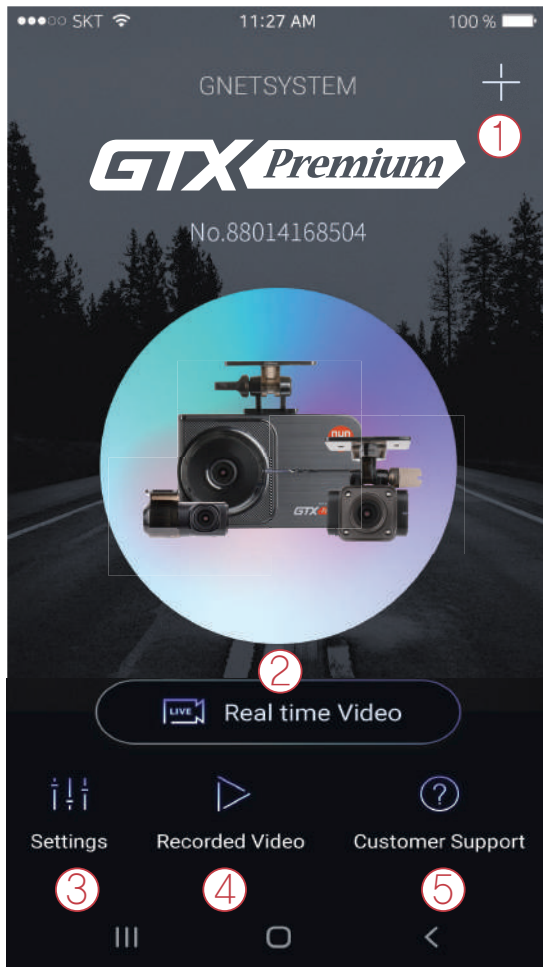


Failure of connection

Press the Customer support button of GNET App on your mobile phone.

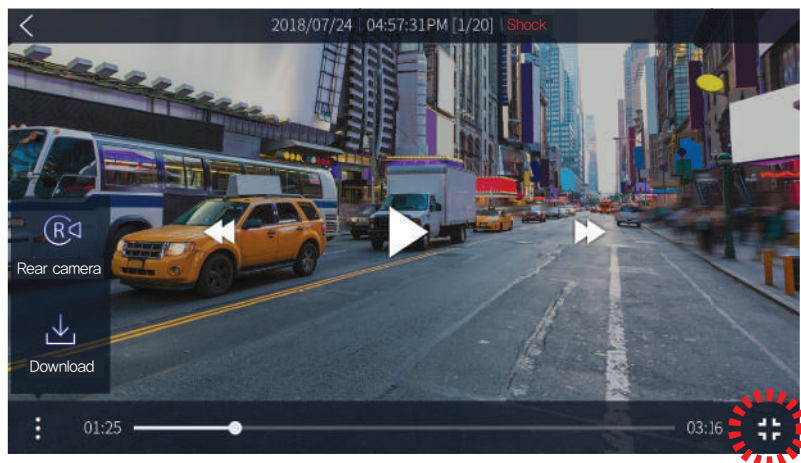
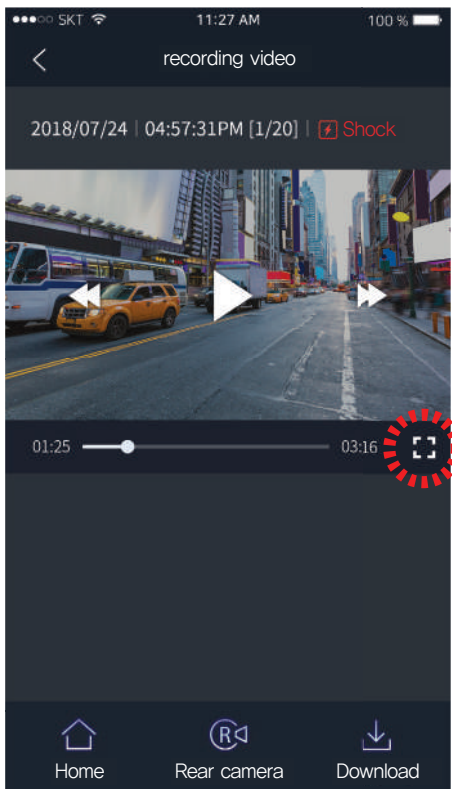


APP Main Screen Description



- ① This function allows you to connect other dash cams or delete the registered devices.
※ Supported only on Android mobile
- ② To view a live video feed from the dash cam.
- ③ You can easily toggle camera settings via your mobile phone. When finished, select the “Save” button to reboot the system.
- ④ View previously recorded video from the cam. Video can be downloaded directly onto the mobile phone.
- ⑤ Customer Support
Need product support? Select this button to be directed to our customer support center.

APP Screen description for a recorded video



Both vertical and horizontal modes are provided to the screen of real-time and recorded videos, allowing you to view the images in a wider screen depending on the situation.

Warranty Card

Product	GNET Dash cam		Model	GTX Premium
Serial Number			Purchase Date	
Customer Information	Name		Tel	
	Address			
Seller/ Vendor			Tel	
Warranty Period	Dash Camera : Two years Micro SD card : Six months			

*If you would like to repair the product, please contact by e-mail address info@gnetssystem.com



www.gnetssystem.com/eng
 6F Lotte IT Castle II Gasan Digital 2ro 98,
 Geumcheon-gu, Seoul, Korea
info@gnetssystem.com

