



Cloud User Manual



G-ONQ PRO

2CH QHD/QHD DASH CAM

Quick User Guide rev01

This manual includes the basic information required in order to set up and operate the G-ONQ PRO. For more details including all other official user manuals for G-ON product, please visit the GNET SYSTEM's website at: <https://www.gnetsystem.com/eng> → SUPPORT → DOWNLOAD

IMPORTANT SAFETY INSTRUCTIONS WARNING

© 2022 GNET SYSTEM CO.,LTD. or its subsidiaries All rights reserved. Under the copyright laws, this manual may not be copied, in whole or in part, without the written consent of GNET SYSTEM CO.,LTD. GNET SYSTEM CO.,LTD reserves the right to change or improve its products and to make changes in the content of this manual without obligation to notify any person or organization of such changes or improvements. Go to www.gnetsystem.com for current updates and supplemental information concerning the use of this product.

GNET® and the GNET logo, are trademarks of GNET SYSTEM CO.,LTD. or its subsidiaries, registered in South Korea and other countries. GNET is a trademark of GNET SYSTEM Co., Ltd. or its subsidiaries. These trademarks may not be used without the express permission of GNET.

microSD® and the microSD logo are trademarks of SD-3C, LLC. Wi-Fi® is a registered mark of Wi-Fi Alliance Corporation.

- Do not expose the unit to electrical shock or debris.
 - This may cause product damage, fire, or electrical shock.
- Avoid use with excessive vehicle window tints or special auto glass.
 - Images may be blurry or distorted and may cause interference with the reception rate of the GPS.
- Do not modify or dismantle the device/ accessories.
 - We are not responsible for any damage to the device or vehicle due to user tampering.
- Never operate the device or adjust settings while driving.
 - Always keep your eyes on the road.
- Do not use liquids or chemicals to clean the product or accessories.
 - This may cause product damage, fire, or electrical shock.
- Please use a non-scratch lens cloth to clean the product and accessories.
 - Routinely clean camera lens for best results.
- In the absence of the external GPS, the device's date and time may be reset.
 - Please always check that the date/ time is correct.
- When parked for long periods of time in direct sunlight, a temperature increase inside the vehicle may result in a memory card corruption and/ or recognition error.
 - It is recommended to remove the memory card and store it out of direct sunlight during long periods of vehicle inactivity.
- Avoid high temperature or high humidity environment for normal operation of the product.
- Check the operation of the interior camera(S) periodically before driving.
 - Only the front camera will be captured in the event of a malfunction or defect.
- Warning: Operation of this equipment in a residential environment could cause radio interference.

CAUTION FOR MEMORY CARD

- Overtime, memory degradation can occur and should be replaced periodically.
- To prevent incompatibility problems, please use only a genuine GNET memory card. The GNET memory cards are specifically designed to operate with our GNET systems and are covered under our warranty program.
- When a vehicle accident occurred, it is recommended to remove the memory card from the device and save the data to a computer immediately. When the memory card is full, the data will be overwritten, and the accident data will be lost.
- Please be sure to remove the memory card only after the recording LED is off. Otherwise, if removed too early, video data could be lost or corrupted. This can also shorten the card's lifespan.
- Please do not interchange / swap the memory cards between other products. Data may be erased and lost if the memory card is automatically formatted.
- It is recommended that the memory card be formatted at least twice a month for product and lifespan maintenance. For best results, please use the official SD Formatter (www.sdcard.org).
- GNET System dash cameras can support memory card (SD) capacities ranging from 32GB to 512GB.
- When a new or used memory card is inserted into the device for the first time, the system will go into standby mode for 3 to 5 minutes. Please do not attempt to remove the memory card during standby mode or when the device is formatting the card.
- It is possible to format the memory card in the GNET application for Mac and PC. Please visit the GNET SYSTEM's website at:
<https://www.gnetssystem.com/eng> → SUPPORT → DOWNLOAD

PRODUCT COMPONENTS

Basic Components



Main Camera



Rear Camera



Hardwire Kit



Screw, Wrench



Micro SD
Memory card



Rear Camera
connection cable



Wi-Fi dongle



External GPS



User Manual

Optional Product



Cigarette lighter power cable



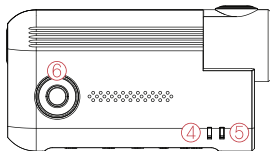
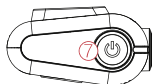
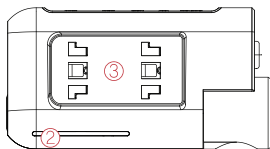
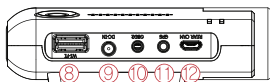
OBD power cable

! Cigarette lighter and OBD power cables are each sold separately.

- ※ The size and appearance of the components depicted above may be different from the real components.
- ※ Specifications and components may be changed without notice for quality assurance.
- ※ We highly recommend that a GNET Genuine Memory Card be used with all GNET products.

NAME OF EACH PART

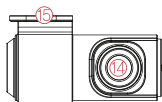
Front camera



- | | | |
|------------------------|---------------------------|--------------------------|
| ① Front Camera Lens | ⑥ Wi-Fi connection button | ⑪ External GPS Connector |
| ② Security LED | ⑦ Power Button | ⑫ Rear Camera Slot |
| ③ Front camera bracket | ⑧ Wi-Fi USB dongle Slot | ⑬ Micro SD card cover |
| ④ GPS LED | ⑨ Power connector (DC-IN) | |
| ⑤ REC LED | ⑩ OBD2 Connector | |

Rear camera

- ⑭ Rear camera lens
- ⑮ Rear camera mount
- ⑯ Rear cable connection port



SPECIFICATIONS

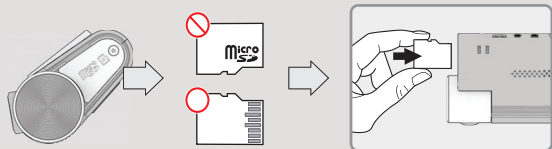
| | |
|-------------------------------------|---|
| Image Sensor | SONY STARVIS2 |
| Audio input | Built-in Microphone |
| Video Compression | H.265 |
| Audio Compression | ADPCM |
| Resolution | Front : QHD (2560 X 1440), Rear : QHD (2560 X 1440) |
| Frame Rate | All cameras : Max. 30 FPS |
| Recording Time(Approx.) | 32GB : 2 hrs 20 mins / 64GB : 5 hrs / 128GB : 9hrs 50 mins / 256GB : 19hrs 30 mins / 512GB : 39 hrs |
| 3G/4G/Router (Optional) | Connect to withCLOUD via 3G/ 4G/ Router telecommunication |
| Wi-Fi | Connect to GNET Smart phone application via Wi-fi dongle |
| G-Sensor | Event recording by External Shock |
| Speaker | Operation Status alarm / Voice guidance |
| External GPS | Synched with Google map, Keep track of location and Speed |
| Angle Of View | Front: 140°, Rear: 140° |
| Viewer | Windows 7/8/10, 32Bit/ 64Bit Supported, CPU i5 3.0GHz, 4GB memory minimum requirement - Delay could occur when playing more than three channel demending on specification on PC. WebView2 Runtime must be installed for the use of Google maps. |
| Power | DC 12V - 24V |
| Allowable current of providing fuse | 3A |
| Operation Temperature | -20°C ~ 70°C |
| Humidity | 10~95% |
| Dimension (WxHxD, mm) | Front: 116x56x32, Rear: 56.5x31x30 |

※ Specifications and components are subject to change without notice for quality assurance.

INSTALLATION

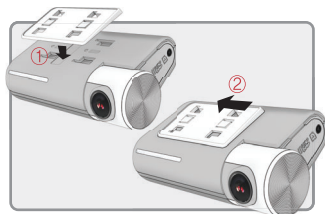
Inserting Memory Card

! Please be fully aware of the orientation of the Micro SD Memory Card.



HOW TO INSTALL DASHCAM

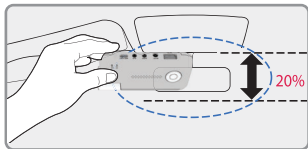
- 1 Assemble the front camera with the provided bracket in the order displayed. Make sure bracket is hooked correctly. Push and align it until a sound is heard. (①,②).



- 2 Once the bracket is secure, ensure that the memory card has been inserted. Proceed to peel the cover from the double sided tape on the bracket.

- 3 Install the front camera onto the front windshield of the vehicle making sure the angle and location is properly aligned.

TIP: The adhesive is extremely sticky. Avoid touching the adhesive to the windshield until the mount is properly positioned and aligned.



- 4 Depending on the vehicle, the front angle may be different. It is recommend to hold a dash cam vertically based on a regular passenger car.

- 5 Connect the power cable to the fuse box terminal inside the vehicle.
(The connected terminal should be one which is always supplied power even when ACC power is turned off, such as emergency lights and/ or door racks.)
Otherwise if using a cigar power cable, plug it directly into the vehicle cigar socket.

⚠ CAUTION

GNET strongly recommends having an experienced installer with the proper knowledge of electrical systems install the device. Incorrectly wiring the power cable can result in damage to the vehicle or the battery and can cause bodily injury.

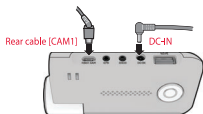


***3-wire power cable**

Connect ACC to a fuse that does not flow when the vehicle is switched off
Connect VCC to current fuse at vehicle start-off
Connect GND to ground on the vehicle's body

***2-wire power cable**

Connect ACC and VCC to the terminal together, and change the setting from "3 wires" to "2 wires".

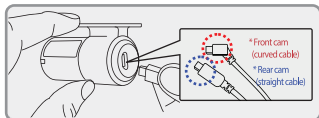


- 6 Connect the other side of the power cable to the DC-IN labeled slot of the front camera.

- 7 Attach the rear camera to the rear windshield of the vehicle and connect the cable to the front camera.

WARNING

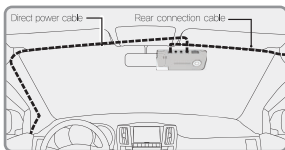
When the cable is bent as shown in the picture, the data flow may be interrupted and a recording error may occur. Please be careful.



- 8 Carefully tuck the power cable and rear camera connection cable into the linings of the vehicle between the ceiling and glass.

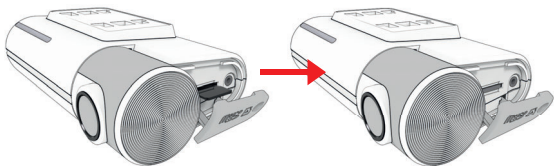
⚠ CAUTION

GPS reception and terrestrial digital sensitivity may decrease depending on the navigation installed. When installing power cables and rear camera access cables, it is recommended that each cable be installed on the opposite side. For example, install the power cable facing the driver's side and the rear camera access cable facing the opposite seat.

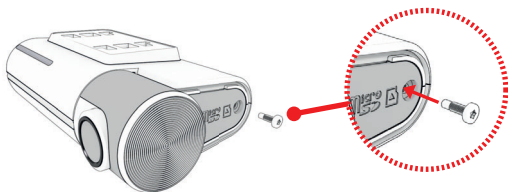


SD CARD SECURE COVER

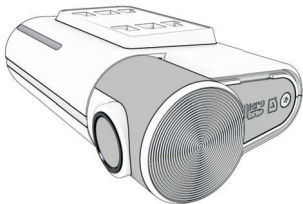
- 1 Open the SD card cover and insert the memory card.



- 2 Then slide the SD cover into the hole as shown, and fasten the screw to the body.



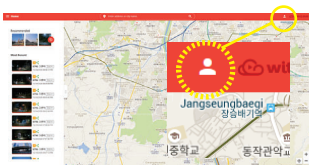
- 3 Covering the SD card is completed.



Become a Cloud member

<http://cloud.gnetsystem.com>

- 1 Please access LINK and click the "Sign up" button.

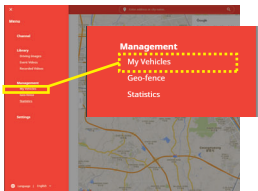


- 2 Fill in your information and proceed by clicking the "Sign up" button.

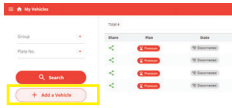


Enroll your Vehicle/ Dash cam information

- 1 When you login to the cloud server for the first time, click the "My Vehicles" button from the menu.



- 2 Click the + Add a Vehicle button and enroll the vehicle/ Dash cam information



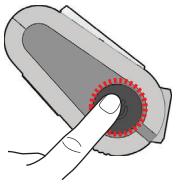
- 3 After you fill in your information, make sure to insert the serial number from your dash camera device.

The dash camera serial is displayed on the front camera label.

Once the vehicle registration is complete, the data of your dash camera will now be stored in the cloud servers automatically.

| Name | Plate No. | Status |
|------|-----------|----------------|
| | + | 10 (Suspended) |
| | + | 10 (Suspended) |
| | + | 10 (Suspended) |
| | + | 10 (Suspended) |

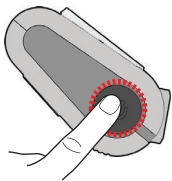
WI-FI POWER ON/OFF



The Wi-Fi power is turned on/ off by pressing the power button twice.

- ! G-net application and cloud mode are not available while Wi-Fi power cuts.

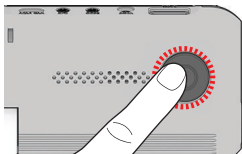
POWER ON/OFF



Turn off and restart the system.

- ! In case of turn the system off by holding the power button, you have to press and hold the power button again in order to restart the system.

CHANGE INTO WI-FI OR CLOUD MODE



The Wi-Fi mode is changed to the CLOUD mode or the CLOUD mode is changed to the Wi-Fi mode if you press the Wi-Fi button for 5~6 seconds.

(At this time, when switching to the Wi-Fi mode or the CLOUD mode, DASHCAM is on and does not reboot)

PLAYER MENU NAME



① Tool Box

- Save
- Open Folder
- Print
- Setting

② Google Map

When GPS and internet are connected, it will work normally.

③ Playlists and Information Display

④ GPS reception window

It can be used only when an external GPS is connected.

⑤ Video control popup

- Thumbnail
- Draw a lane
- View a video
- Split View
- PIP View
- Toggle color modification mode

⑥ G-sensor (acceleration) graph

⑦ Speedometer

It can be used only when an external GPS is connected

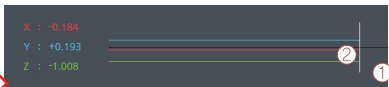
⑧ Play a recorded video

- ▶ forward play
- ⏸ Pause
- 🔄 Repeat event video
- ⏮ ⏭ Previous, Next Event
- ⏮ ⏪ Rewind 1 Second
- ⏩ ⏭ Play frame by frame

⑨ Adjust playback speed ⑩ Sound control

How to check G-sensor data

<Magnification of G-sensor data>



① The location of the image currently being played

② Numerical values and graphs of three-dimensional coordinate system information (G-sensor data)

- When you play the video, three-dimensional coordinate system information (G-sensor data) on the X-axis(progress direction), Y-axis (left-right), and Z-axis (height) of the image currently being played at the G-sensor data location is output.

SMARTPHONE CONNECTION

How to connect an Android smartphone

- 1 Install the GNET application on the smartphone.
* G-net application is not available while cloud mode is on.

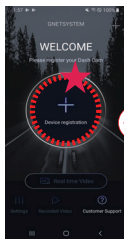


- 2 Press the Wi-Fi® button on the dash camera to enter standby mode with the voice message "Registration standby mode" (last 2 minutes)



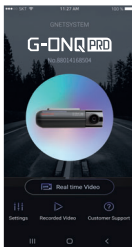
- 3 Touch the "+" to search for your device - use the left and right arrows scroll. Once your device has been located select the "Connect" button.

[★] will indicate first time connection to the device.



- 4 The registration of the dash camera is completed when you hear "User's connected".

* If the connection fails due to a weak Wi-Fi signal, please carefully unplug and immediately re-insert the Wi-Fi dongle back into the camera. Proceed to try the connection again by pressing the Wi-Fi button to enter standby mode.



How to connect an Apple iOS smartphone



- 1 Install the GNET application on the smartphone.
* G-net application is not available while cloud mode is on.

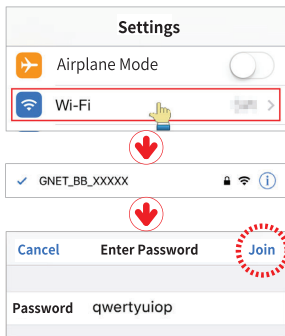
- 2 Press the Wi-Fi® button on the dash camera to enter standby mode with the voice message “Registration standby mode” (last 2 minutes)



- 3 Enter the Settings menu and proceed to locate and connect to the dash camera's Wi-Fi network (begins with GNET_BB_).

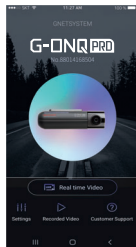


The password is as follows: **qwertyuiop**

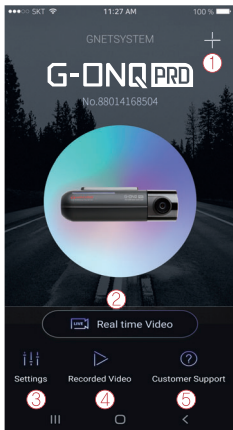


- 4 The registration of the dash camera is completed when you hear “User's connected”.

* If the connection fails due to a weak Wi-Fi signal, please carefully unplug and immediately re-insert the Wi-Fi dongle back into the camera. Proceed to try the connection again by pressing the Wi-Fi button to enter standby mode.



GNET Smartphone App



- ① This function allows you to connect other dash cams or delete the registered devices.
※ Supported only on Android mobile
- ② Real-Time Video
Select this button to view a live video feed from the dash camera.
- ③ Settings
You can easily toggle camera settings via your smartphone. When finished, select the "Save" button to reboot the system.
- ④ Recorded Video
View previously recorded video from the camera's SD card. Video can be downloaded directly onto the smartphone.
- ⑤ Customer Support
Need product support? Select this button to be directed to our customer support center.

Download our Smartphone App

Available for Android and Apple iOS. Search "GNET" on Google Play and Apple App Store.

Or simply scan our QR Code:



Precaution Before Use

- Set the time zone on the GENT app or the viewer.
- Smartphone make, model, or specification can interfere and delay real time video playback.
- DO NOT operate the device or adjust App settings while driving.
Please always safely pull over when interacting with GNET products.

Warranty Card

| | | | | |
|----------------------|--|--|---------------|-----------|
| Product | GNET Dash cam | | Model | G-ONQ PRO |
| Serial Number | | | Purchase Date | |
| Customer Information | Name | | Tel | |
| | Address | | | |
| Seller/ Vendor | | | Tel | |
| Warranty Period | Dash Camera : 2 Year Micro SD card : 6 months | | | |

* If you require product repair, service and/or support,
 please contact your local seller or send us an email: info@gnetssystem.com



www.gnetssystem.com/eng
 6F Lotte IT Castle II Gasan Digital 2ro 98,
 Geumcheon-gu, Seoul, Korea
info@gnetssystem.com

