

G-ON2

2CH QHD | FHD DASH CAM

USER MANUAL



CONTENTS

01. BEFORE USE

IMPORTANT SAFTY	01
INSTRUCTIONS WARNING	
CAUTION FOR MEMORY CARD	02
PRODUCT FEATURES	03
PACKAGE COMPONENTS	04
NAME OF EACH PART	06
SPECIFICATION	08
INSTALLATION	09

02. FUNCTION

HOW TO USE	18
MEMORY CARD VIDEO FOLDER	27

03. APPLICATION

BEFORE WI-FI CONNECTION	29
SMARTPHONE CONNECTION	30

04. withCLOUD

USING 「WITHCLOUD」	33
CONNECTION	34
HOW TO USE 'WITHCLOUD'	37

05. PC VIEWER

PC VIEWER INSTALLATION	39
SCREEN GUIDE	42
QUESTION AND ANSWER	44
TROUBLE SHOOTING	62
WARRANTY CARD	68

IMPORTANT SAFETY INSTRUCTIONS WARNING

01. BEFORE USE

© 2021 GNET SYSTEM CO.,LTD. or its subsidiaries All rights reserved. Under the copyright laws, this manual may not be copied, in whole or in part, without the written consent of GNET SYSTEM CO.,LTD. GNET SYSTEM CO.,LTD reserves the right to change or improve its products and to make changes in the content of this manual without obligation to notify any person or organization of such changes or improvements. Go to www.gnetsystem.com for current updates and supplemental information concerning the use of this product.

vGNET® and the GNET logo, are trademarks of GNET SYSTEM CO.,LTD. or its subsidiaries, registered in South Korea and other countries. GNET G-ON2™, are trademarks of GNET SYSTEM CO.,LTD. or its subsidiaries. These trademarks may not be used without the express permission of GNET.

microSD® and the microSD logo are trademarks of SD-3C, LLC. Wi-Fi® is a registered mark of Wi-Fi Alliance Corporation.

-
- Do not expose the unit to electrical shock or debris.
 - This may cause product damage, fire, or electrical shock.
 - Avoid use with excessive vehicle window tints or special auto glass.
 - Images may be blurry or distorted and may cause interference with the reception rate of the GPS.
 - Do not modify or dismantle the device/ accessories.
 - We are not responsible for any damage to the device or vehicle due to user tampering.
 - Never operate the device or adjust settings while driving.
 - Always keep your eyes on the road.
 - Do not use liquids or chemicals to clean the product or accessories.
 - This may cause product damage, fire, or electrical shock.
 - Please use a non-scratch lens cloth to clean the product and accessories.
 - Routinely clean camera lens for best results.
 - In the absence of the external GPS, the device's date and time may be reset.
 - Please always check that the date/ time is correct.
 - When parked for long periods of time in direct sunlight, a temperature increase inside the vehicle may result in a memory card corruption and/ or recognition error.
 - It is recommended to remove the memory card and store it out of direct sunlight during long periods of vehicle inactivity.
 - Avoid high temperature or high humidity environment for normal operation of the product.
 - Check the operation of the rear camera(s) periodically before driving.
 - Only the front camera will be captured in the event of a malfunction or defect.

*Warning: Operation of this equipment in a residential environment could cause radio interference.

- Overtime, memory degradation can occur and should be replaced periodically.
- To prevent incompatibility problems, please use only a genuine GNET memory card. The GNET memory cards are specifically designed to operate with our GNET systems and are covered under our warranty program.
- When a vehicle accident occurred, it is recommended to remove the memory card from the device and save the data to a computer immediately. When the memory card is full, the data will be overwritten, and the accident data will be lost.
- Please be sure to remove the memory card only after the recording LED is off. Otherwise, if removed too early, video data could be lost or corrupted. This can also shorten the card's lifespan.
- Please do not interchange / swap the memory cards between other products. Data may be erased and lost if the memory card is automatically formatted.
- It is recommended that the memory card be formatted at least twice a month for product and lifespan maintenance. For best results, please use the official SD Formatter (www.sdcard.org).
- GNET System dash cameras can support memory card (SD) capacities ranging from 8GB to 1TB.
- When a new or used memory card is inserted into the device for the first time, the system will go into standby mode for 3 to 5 minutes. Please do not attempt to remove the memory card during standby mode or when the device is formatting the card.
- It is possible to format the memory card in the GNET application for Mac and PC. Please visit the GNET SYSTEM's website at:
<https://www.gnetsystem.com/eng> → SUPPORT → DOWNLOAD



SONY STARVIS
Image Sensor



CLOUD System



2CH
QHD/FHD



H.265 CODEC



G-NET
Wi-Fi APP



SD Locks for
memory protection

• Basic Components



Main camera



Rear camera



User manual



Hardwire kit



Screw, Wrench



Micro SD
memory card



Rear camera
connection cable



Wi-Fi dongle



External GPS

• Optional Product



Cigarette lighter power cable



OBD power cable

! Cigarette lighter and OBD power cables are each sold separately.

※ The size and appearance of the components depicted above may be different from the real components.

※ Specifications and components may be changed without notice for quality assurance.

※ We highly recommend that a GNET Genuine Memory Card be used with all GNET products.

- G-ON2i for Taxi



Main camera



Interior camera

- G-ON2T for Truck

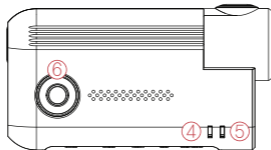
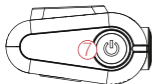
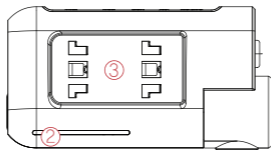
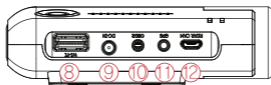


Main camera



Waterproof camera

• Front Camera

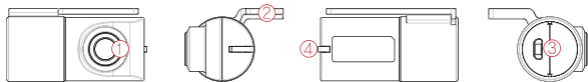


- ① Front camera lens
- ② Security LED
- ③ Front camera bracket
- ④ GPS LED
- ⑤ REC LED

- ⑥ Wi-Fi connection button
- ⑦ Power button
- ⑧ Wi-Fi USB dongle port
- ⑨ Power connector port (DC-IN)
- ⑩ OBD2 connector port

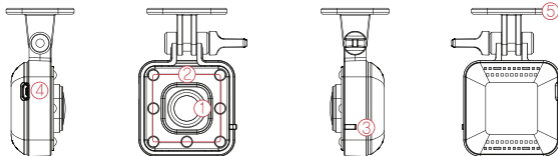
- ⑪ External GPS connector port
- ⑫ Rear camera connector port
- ⑬ Micro SD card cover

• Rear Camera



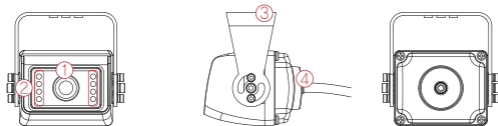
- ① Cam lens ② Rear cam mount ③ Rear cam connector port ④ Status LED

• Interior Camera



- ① Cam lens ② IR LED ③ Status LED ④ Interior cam connector port ⑤ Bracket

• Waterproof Camera



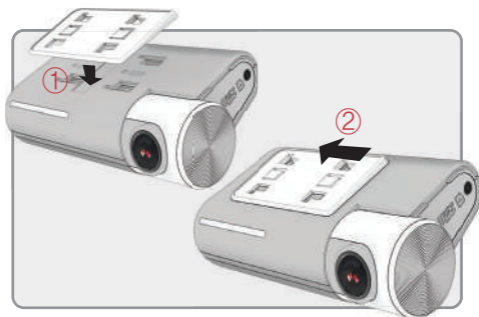
- ① Cam lens ② IR LED ③ Bracket ④ Waterproof cam cable

Image Sensor	SONY Starvis
Audio Input	Built-in microphone
Video Compression	H.265
Audio Compression	ADPCM
Resolution	Front : QHD (2560 X 1440), Rear : FHD (1920 X 1080)
Frame Rate	All cameras : Max. 30 FPS
Recording Time(Approx.)	32GB : 2hrs 50mins / 64GB : 5hrs 40mins / 128GB : 11hrs 20mins 256GB : 22hrs 40mins
3G/4G/Router (Optional)	Connect to withCLOUD via 3G/ 4G/ router telecommunication
Wi-Fi (Optional)	Connect to GNET Smart phone application via Wi-fi dongle
G-Sensor	Event recording by external shock
Speaker	Operation status alarm / Voice guidance
External GPS	Synched with Google map, keep track of location and speed
Angle Of View	Front: 140°, Rear: 140°
Viewer	Windows XP/7/8/10, Mac, Support 32Bit / 64Bit, Synchronizing Google map with PC viewer is supported over Windows7 and explorer 10 as per Google' s policy.
Power	DC 12V - 24V
Allowable current of providing fuse	3A
Operation Temperature	-20℃ ~ 60℃
Humidity	10~95%
Dimension (WxHxD, mm)	Front: 116x56x32, Rear: 44x38x28

※ Specifications and components are subject to change without notice for quality assurance.

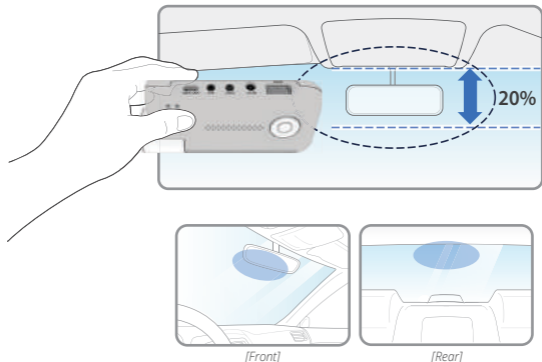
• How to Install Dash cam

- 1** Assemble the front camera with the provided bracket in the order displayed. Make sure bracket is hooked correctly. Push and align it until a sound is heard. (①,②).



-
- 2** Once the bracket is secure, ensure that the memory card has been inserted. Proceed to peel the cover from the double sided tape on the bracket.

- 3** Install the front camera onto the front windshield of the vehicle making sure the angle and location is properly aligned.



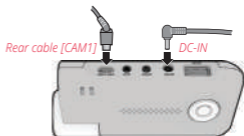
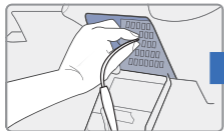
TIP: The adhesive is extremely sticky. Avoid touching the adhesive to the windshield until the mount is properly positioned and aligned.

- 4** Depending on the vehicle, the front angle may be different. It is recommend to hold a dash cam vertically based on a regular passenger car.

- 5 Connect the power cable to the fuse box terminal inside the vehicle.
(The connected terminal should be one which is always supplied power even when ACC power is turned off, such as emergency lights and/ or door racks.) Otherwise if using a cigar power cable, plug it directly into the vehicle cigar socket.

3-Wire Power Cable

- Connect **VCC** to current fuse at vehicle start-off
- Connect **ACC** to a fuse that does not flow when the vehicle is switched off
- Connect **GND** to ground on the vehicle's body

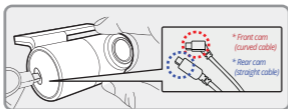


⚠ CAUTION

GNET strongly recommends having an experienced installer with the proper knowledge of electrical systems install the device. Incorrectly wiring the power cable can result in damage to the vehicle or the battery and can cause bodily injury.

- 6 Connect the other side of the power cable to the DC-IN labeled port of the front camera.

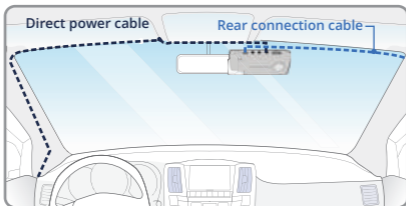
- 7** Attach the rear camera to the rear windshield of the vehicle and connect the cable to the front camera.



WARNING

When the cable is bent as shown in the picture, the data flow may be interrupted and a recording error may occur. Please be careful.

- 8** Carefully tuck the power cable and rear camera connection cable into the linings of the vehicle between the ceiling and glass.



CAUTION

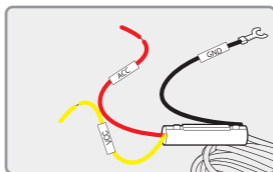
GPS reception and terrestrial digital sensitivity may decrease depending on the navigation installed. When installing power cables and rear camera access cables, it is recommended that each cable be installed on the opposite side. For example, install the power cable facing the driver's side and the rear camera access cable facing the opposite seat.

• How to Install Fuse Cable

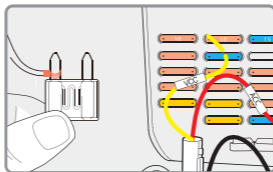
Please refer to the car manual because the fuse box differs depending on the car model. It is recommended that install the power from the automobile shop. We are not responsible for any damage caused by self-installation.

1 Find the Fuse box using electric tester from fuse box of the vehicle.

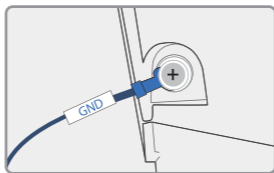
- ※[VCC] (Yellow line): When the engine is off, it connects with a fuse that the electric current is flowing.
- ※[ACC] (Red line): When the engine is off, it connects with a fuse that the electric current is not flowing.



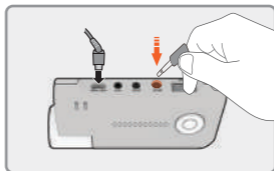
2 After connecting [VCC] and [ACC] on the vehicle fuse, put them into the fuse box.



- 3** Connect [GND] to the vehicle.
 (Do not connect the volt which is connected to the dashboard. Current is not flowing.)

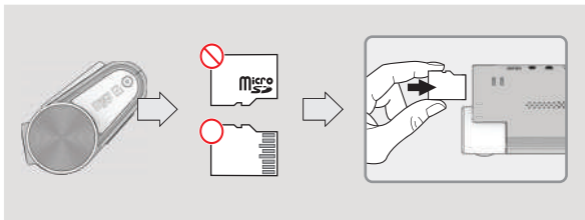


- 4** Connect the power cable to confirm the operation of the product. And organize cables to finish installation work.



• Inserting the Memory Card

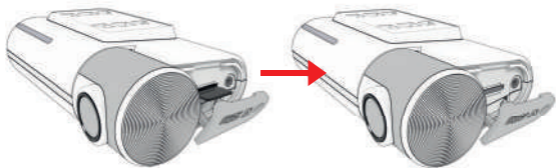
! Please be fully aware of the orientation of the Micro SD Memory Card.



- Push the Micro SD Memory card into the memory card slot until you hear 'click' sound.
- When using memory card for the first time or when the memory card is reused after format, the system will be in stand-by mode for 3~5 minutes to create system files and checking the memory card.
- Recording starts with voice guidance saying "Start recording"

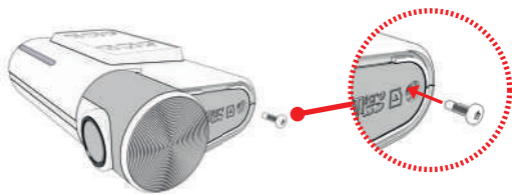
- SD Card Secure Cover

- 1 Open the SD card cover and insert the memory card.

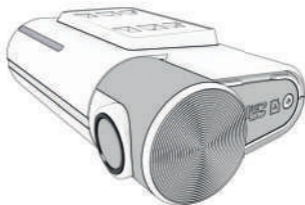


- SD Card Secure Cover

- 2** Then slide the SD cover into the hole as shown, and fasten the screw to the body.



- 3** Covering the SD card is completed.

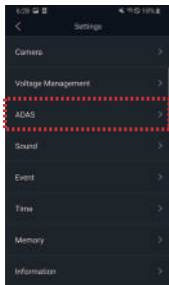


• Product Operation

<p>POWER ON</p>	<p>All LEDs will be turned on when the engine is on or the power is on. "Start recording" starts along with voice guidance and the REC LED is turned on.</p> <p>GPS LED will be turned off if it is not connected by external GPS.</p>
<p>POWER OFF</p>	<p>All LEDs will be turned off when press the power button or the constant cable is disconnected.</p>
<p>EXTERNAL GPS</p>	<p>GPS LED will flicker during GPS connection.</p> <p>When the GPS connection is completed, GPS LED will be on. Please check the connection again if GPS LED does not turn on though the external GPS is connected.</p>
<p>VOICE RECORDING ON/OFF</p>	<p>If you press the Wi-Fi button for 2 seconds, the voice recording will be stopped. If press the Wi-Fi button again, the voice recording will start.</p> <p>* Caution: If you press the Wi-Fi button on dashcam over 5 seconds, the dashcam becomes a factory default. So, please do not put it over 5 seconds if you do not want a factory default.</p>
<p>Wi-Fi USER REGISTRATION</p>	<p>If press the Wi-Fi button, the stand-by mode voice guidance will be displayed. If there is no connection for 2 minutes, it will be automatically discontinued. If press the Wi-Fi button again, the voice guidance will be displayed.</p> <p>*Notice : You need to set the CLOUD as "OFF" in the viewer, only if you want to convert "withCLOUD" to GNET APP after you use "withCLOUD" APP.</p> <p>If you press the power button 1sec or 1sec twice, you can turn on/off the Wi-Fi signal. (G-ON, G-ON2, G-ON3, G-ON4). If your dashcam is not connected to the CLOUD, please check whether Wi-Fi is off.</p>

• ADAS Function - Android

Set the ADAS function at the GNET application.



① ADAS ON/OFF :

Turn on and off all sub-features of ADAS at once.

② LDWS(Lane Departure Warning System) :

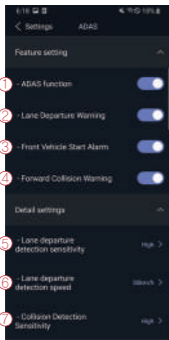
When the car leaves the lane, the detection alarm will go off.
LDWS only works if it is above the set speed.

③ FVSA (Front Vehicle Start Alarm) :

When the distance between the car and the front is more than 2m away, the warning alarm beeps.

④ FCWS (Forward Collision Warning System) :

When the vehicle in front rapidly reduces speed, and it approaches very close, the warning alarm beeps.



⑤ Lane departure detection sensitivity :

Set the sensitivity as following 3 steps.
- Lower | Medium | Higher

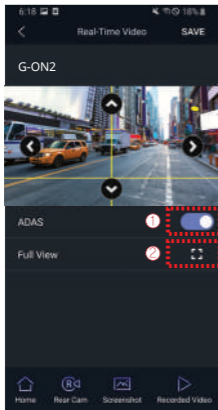
⑥ Lane departure detection speed :

Set the lane detection speed limit.
- 50km/h | 60km/h | 70km/h

⑦ Collision detection sensitivity :

Set the collision detection sensitivity as following 3 steps.
- Lower | Medium | Higher

• ADAS Lane correction - Android



❗ To improve the ADAS recognition rate, it is recommended to adjust the dash camera position by matching the end of the vehicle bonnet line on condition that "the lane correction button" is turned on in the real time screen.

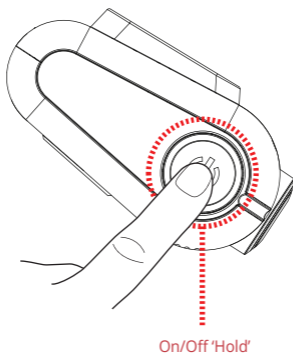
- ① Guideline view on / off
- ② Full screen view (landscape)



- ① Up direction
- ② Left direction
- ③ Right direction
- ④ Downward direction
- ⑤ Back
- ⑥ Save
- ⑦ Guidance lines on/ off
- ⑧ Screen zoom out

• Dash cam Power On/Off

Press the power button to turn the system off.
To restart the system, press and hold the power button.

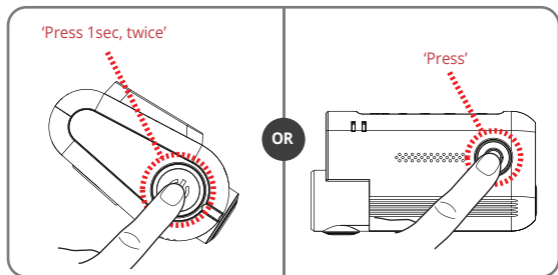


In case of turn the system off by holding the power button, you have to press and hold the power button again in order to restart the system.

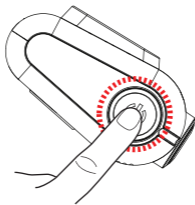
- Wi-Fi On/Off

Wi-Fi power on

The Wi-Fi power will be on when you press the power button for two times or press Wi-Fi button for 1 time.

**Wi-Fi power off**

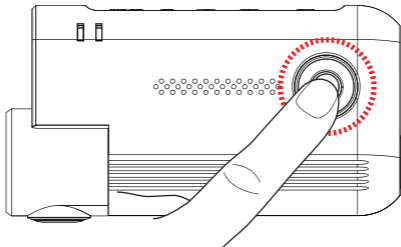
The Wi-Fi power will be off when you press the power button for two times.



- **Change Into Wi-Fi or Cloud Mode**

The Wi-Fi mode is changed to the CLOUD mode or the CLOUD mode is changed to the Wi-Fi mode if you press the Wi-Fi button for 3~4 seconds.

(At this time, when switching to the Wi-Fi mode or the CLOUD mode, DASHCAM is on and does not reboot)



• Recording Mode

Normal Recording	<ul style="list-style-type: none"> - When the power is connected, the normal recording will start. - Security LED flickers left and right every 2 seconds. 	
Event Recording	Impact Recording	<ul style="list-style-type: none"> - If there is impact or shock, the record LED will flicker and record in event recording mode - After event recording is finished, it will be automatically changed to normal recording mode
	Parking Recording	<ul style="list-style-type: none"> - After the parking mode is entered when the ACC voltage is released, the parking mode automatically operates in 10seconds (3 Wired) - It is recorded in 10 frames, so the recording time can be extended. - Security LED flickers left and right every 4 seconds
	Motion Detection recording	<ul style="list-style-type: none"> - If it connects with ACC voltage, it switches to normal recording mode (3 Wired) - Under parking mode, the device will record any movement happen within around 3 meters.
<ul style="list-style-type: none"> - Security LED will quickly flicker 		
<ul style="list-style-type: none"> - When no motion is detected, it automatically changes to parking mode. 		

- **Voice Guidance**

CONTENTS	VOICE GUIDANCE
Normal recording	Start recording
System Off	Shut down the system
Overwriting	Recording does not have enough available. Please check overwriting setting.
GPS connection	GPS connected.
Abnormal recording	Video is not being entered.
Enable registration	Stand-by mode for the registration.
Disable registration	Stand-by mode for the registration is released.
Not supported Wi-Fi module	This Wi-Fi module is not supported
No Wi-Fi Dongle	No Wi-Fi Dongle
Complete the smartphone registration	Complete the registration
Already registered smartphone	Already registered smartphone
Connect the Wi-Fi	User's connected.
Disconnect the Wi-Fi	User access disabled.
Connect the cloud	Cloud is connected
Disconnect the cloud	Cloud is disconnected

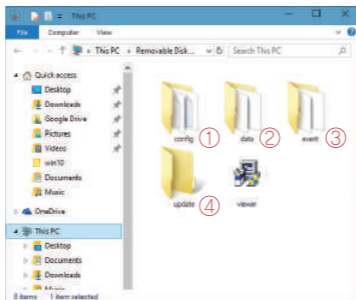
CONTENTS	VOICE GUIDANCE
Change to cloud mode	Change to cloud mode
Change to Wi-fi mode	Change to Wi-fi mode
Wi-fi power on	Wi-fi power is on
Wi-fi power off	Wi-fi power is off
Change the Smartphone setting	Setting changed and reboot
Change parking mode to normal recording	Driving mode to start recording. Safe driving
Format the Micro SD memory card	On- formatting the memory card. Please wait
No Mirco SD memory card	No Memory card
Micro SD memory card damage	Memory card is damaged and can not be recorded
Micro SD memory file system recover	Reboot because of the damaged memory card. Please replace the memory card if this continues
Update the firmware	On installing the program. Do not turn off the power
Fail to firmware update	Program file is corrupt and can not be installed.
Event recording alarm	Impact event has occurred during parking
LBP ON	Shut down the system to protect the battery of car
LBP OFF	Restart the system to protect the battery of car

- 1** Remove the memory card after the device turns off.

- 2** Insert the removed memory card into the memory reader and connect it to the USB port on your PC.

- 3** Select the removable disk in the explorer folder.
 - Folders in the removable disk are displayed as shown on the following page.
 - When the event storage capacity is more than 10%, the 'Events' folder is created.

! Do not randomly delete or format files in the memory card.
Back up your important files in advance.



Predictable recording time of SD memory capacity (Default: All cameras : Max. 30 FPS) :

8GB(40mins), 16GB(1.5hrs), 32GB(3hrs), 64GB(6hrs), 128GB(12hrs), 256GB(23hrs),
512GB(46hrs), 1TB(92hrs)

※ Total recording time may be different depending on use conditions and environment.

<p>① Config (Management system)</p>	<ul style="list-style-type: none"> - Log.txt : It records the device's statement in a log file. - Version.ini : Saving version information of device
<p>② Date (Normal recordings)</p>	<ul style="list-style-type: none"> - Recordings are located. File list numbers are different depending on the Micro SD memory card's capacity.
<p>③ Event (Event recordings)</p>	<ul style="list-style-type: none"> - Event data(Impact, Parking, Motion) are located
<p>④ Update (Firmware update)</p>	<ul style="list-style-type: none"> - Uploading an updated file in this folder automatically sets an up-to-date Firmware.

- **Download our Smartphone App**

- Available for Android and Apple iOS. Search "GNET" on Google Play and Apple App Store.
- Or simply scan our QR Code



- **Precaution before connecting the Smartphone**

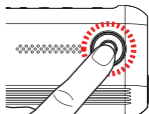
- Set the time zone on the GNET app or the viewer.
- Real-time video and playback can be delayed depending on Smartphone specification.
- Do not handle the device while driving, it may cause serious accidents. Please handle the device after parking/stopping.

• How to connect an Apple iOS smartphone

- 1 Install the GNET application on the smartphone.
* G-net application is not available while cloud mode is on.



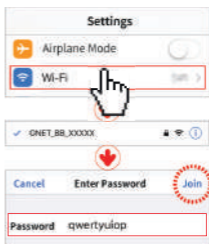
- 2 Press the Wi-Fi® button on the dash camera to enter standby mode with the voice message "Registration standby mode" (last 2 minutes)



- 3 Enter the Settings menu and proceed to locate and connect to the dash camera's Wi-Fi network (begins with GNET_BB_).



The password is as follows: **qwertyuiop**



- 4 The registration of the dash camera is completed when you hear "User's connected".

* If the connection fails due to a weak Wi-Fi signal, please carefully unplug and immediately re-insert the Wi-Fi dongle back into the camera. Proceed to try the connection again by pressing the Wi-Fi button to enter standby mode.

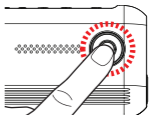


• How to connect an Android smartphone

- 1 Install the GNET application on the smartphone.
* G-net application is not available while cloud mode is on.



- 2 Press the Wi-Fi® button on the dash camera to enter standby mode with the voice message "Registration standby mode" (last 2 minutes)



- 3 Touch the "+" to search for your device - use the left and right arrows scroll. Once your device has been located select the "Connect" button.

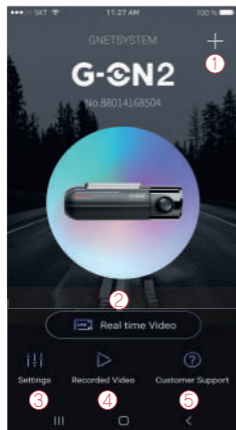
[★] will indicate first time connection to the device.



- 4 The registration of the dash camera is completed when you hear "User's connected".

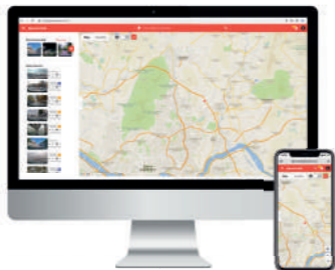
* If the connection fails due to a weak Wi-Fi signal, please carefully unplug and immediately re-insert the Wi-Fi dongle back into the camera. Proceed to try the connection again by pressing the Wi-Fi button to enter standby mode.



• APP Main Screen Description

- ① This function allows you to connect other dash cams or delete the registered devices.
* Supported only on Android mobile
- ② **Real-Time Video**
You can watch a real-time video.
- ③ **Settings**
You can easily change settings via your smartphone. After changing the settings, press the "Save" button to reboot the product (dash cam).
- ④ **Recorded Video**
You can see a recorded video of the dashcam. The video that you need can be saved to the mobile device via download.
- ⑤ **Customer Support**
You can get help with connection via customer support on the app or you can get help by calling our customer support center.

Both mobile apps(Android / iOS) and web are available.



- App



withCLOUD



- Web (You can access it through the address below)

<https://cloud.gnetsystem.com>

Main (PC)



① Menu button

② Location search(Enter City or Adress) : The map moves to the area you searched for.

③ Event alarm : It is displayed when an event occurs, and when you press an event in the list, the video is played.

User icon : You can select Channel / Settings / Logout

④ Recommended : The video is recommended in the order of high views and likes.
Press 'View More' to go to the recommended video page.

⑤ Recent videos : The latest shared video will be displayed based on location.

⑥ Show only my vehicle : Function to show only my vehicle on the map. Can set ON/OFF.
Quick menu(My vehicle) : Run basic menus right away without finding a vehicle on the map.
(If there are multiple vehicles, this is the most recently accessed vehicle.)

⑦ Vehicle icon

Other user 's vehicle



My vehicle(Driving)



My vehicle(Parking)



Main (Mobile)



① Menu button

- ② **Event alarm** : It is displayed when an event occurs, and when you press an event in the list, the video is played.

User icon : You can select Channel / Settings / Logout

Location search(Enter City or Address) : The map moves to the area you searched for.

- ③ **Open/fold the side tabs** : Press the button to open and close the left tab.

- ④ **Recommended** : The video is recommended in the order of high views and likes.
Press 'View More' to go to the recommended video page.

- ⑤ **Recent videos** : The latest shared video will be displayed based on location.

- ⑥ **Show only my vehicle** : Function to show only my vehicle on the map. Can set ON/OFF.
Quick menu(My vehicle) : Run basic menus right away without finding a vehicle on the map.
(If there are multiple vehicles, this is the most recently accessed vehicle.)

- ⑦ **Vehicle icon**

Other user 's vehicle



My vehicle(Driving)



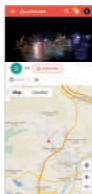
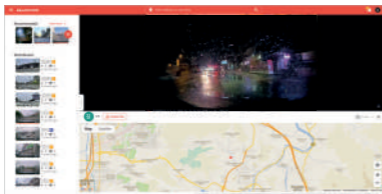
My vehicle(Parking)



Live video / Recommended

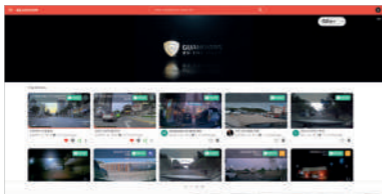
- Live video

You can check the real-time image by selecting the vehicle icon of the user who shared your vehicle or location/video on the map.



- Recommended

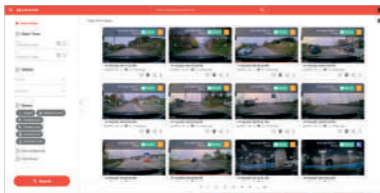
The function of recommending videos with high views and likes. If you press "More" in the recommended video on the main screen, it moves.



Event videos / Channel

- **Event videos**

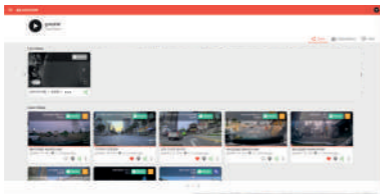
A screen where I collect event videos of my vehicle. You can set up or delete sharing, and search for videos by date/vehicle/event.



- **Channel**

You can view the event video shared by the user, the subscription channel, and the shared video that you like.

Live video of my vehicle is displayed at the lower end of the profile area.



Vehicle management / GPS Tracking

- **Vehicle management**

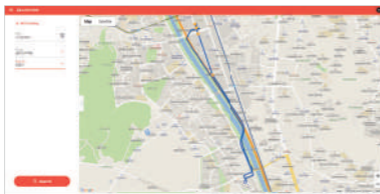
In the registered vehicle, such as setting the location of my vehicle, setting the black box, and setting the cloud plan, all settings related to it are possible. You can check by selecting the photo/text mode of the list.



- **GPS Tracking**

You can view the driving record of the vehicle by date, vehicle, and section, and an event while driving.

The details are also displayed. If you press the driving history, you can know the driving time, mileage, and departure/arrival time.



- !** The Computer's system specifications should be over 'CPU i5 3.0 GHz, Memory 4GB' to play Full HD videos. If they are lower than standard, it may not be able to play the videos or keep the connection.

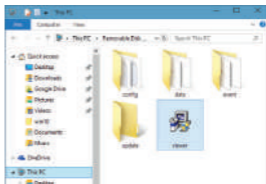
- 1** PC viewer installation file doesn't appear in the memory card used for the first time or formatted. (Otherwise, skip '2~3')

- 2** Insert the Micro SD memory card and turn on the dashcamera.

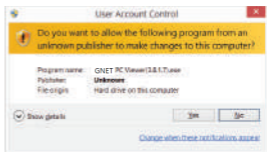
- 3** Do not turn off the power as it is working on creating a data file system for 3 to 5 minutes. All LED flickers while initializing. When it starts recording, REC LED turns on.

- 4** Insert the Micro SD memory card to PC

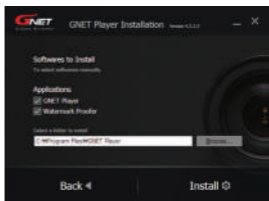
- 5 Install the [Viewer.exe] file in the Micro SD memory card shown on the picture.



- 6 Click the [YES] button on the user control menu.



- 7 Click the [Next] button and click the [Installation] button



- 8** Confirmation the latest version pop-up will appears as picture shown if network is connected. If there is no internet connection, PC Viewer program will be executed directly.




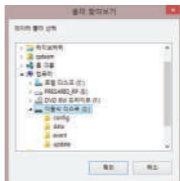
- 9** Click the [Execute a viewer] button to start viewer program.

- 10** When the installation is completed, the PC Viewer program runs automatically and Gnet icon will be created on the computer.



- 11** [Open the file]

When click the file button(), the browse folder will appear like picture. And select removable disk, Press [OK] button.



• PC Viewer - WINDOW



① Tool Box Save Folder Open Print Setting

② Google Map (When GPS and internet are connected, it will work normally)

③ Playlists and Information Display

⑥ G-sensor (acceleration) graph

④ GPS reception window
(It can be used only when an external GPS is connected)

⑦ Speedometer
(It can be used only when an external GPS is connected)

⑤ Video control popup

⑧ Play a recorded video

	Thumbnail
	Draw a lane
	View a video
	Split View
	PIP View
	Toggle (change) color, black and white mode

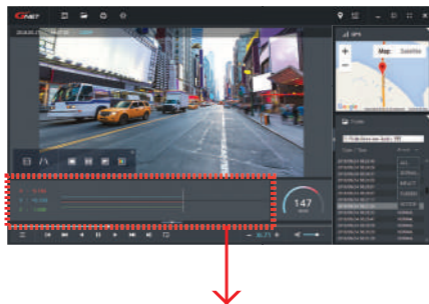
	Reverse and forward play
	Pause
	Repeat event video
	Previous, Next Event
	Play one frame

⑨ Adjust playback speed

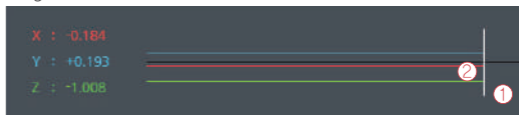
⑩ Sound control

• How to Check G-sensor data

When you play the video, three-dimensional coordinate system information (G-sensor data) on the X-axis(progress direction), Y-axis (left-right), and Z-axis (height) of the image currently being played at the G-sensor data location is output.



<Magnification of G-sensor data>



- ① The location of the image currently being played
- ② Numerical values and graphs of three-dimensional coordinate system information (G-sensor data)

Q

The dash cam makes a “ding dong” sound while driving.

A

As an impact detection sensor inside the dash cam detects impact or curve while driving, there is a buzzer sound with LED flickering.

It means that the dashcam is working correctly.

If the sound from the device bothers you, you can configure the sound and buzzer to turn on/off via a dedicated viewer or an app.

Q

The recordings are out of focus.

A

Out-of-focus issues are caused by incorrect positioning during installation, even if not a lens defect. So, make sure you have the dash cam installed in an exposed position on the windshield. Please kindly move the camera position and try to check the video again. Before installing the dash cam, you must clean the car's windscreen. Dust, excessive pigmentation, and backlighting can blur the video quality. If it still doesn't work after trying all the solutions.

Take a video of the problem and contact your seller or manufacturer.

Q

Is dash cam available for a tinted car?

A

Dark shades can affect clear vision and video quality. If the video is too dark to recognize any objects in the video, it is recommended to remove the tint where the dash cam is installed.

Q

Parking mode works on curves or slopes of the road.

A

To switch to parking mode, the dashcam needs some information such as the path of travel and the horizontal angle of the car. If the car is parked on an incline, the dash cam may not recognize that the car is stationary. In other words, the vehicle maintains an angle above the specified value, the dash cam may misunderstand that some event has occurred.

Q

GPS signal reception does not work properly.

A

For your information, GPS needs to be far away from the dashcam to prevent interruption of GPS reception inside the car. If you install the dashcam behind the front mirror, it is suggested to place the external GPS antenna on the top left or top right.

Q

How can I set the date and time through GNET viewer?

A

Insert the memory card into your PC and open the dedicated PC viewer. Select the time zone to match the date and time on your current location in Settings and save it. Then, reinsert the memory card into the camera and start over. Setup is completed in a few minutes depending on your environment.

Q If the dashcam is connected with a constant power cable, won't the car battery discharge?

A Our dash cam has a function that automatically turns off when the voltage value of the car engine is below. The feature, LBP(Low Battery Protector) prevents car battery discharge and it gives the minimum battery charge rate so that the driver can activate the engine without failure. However, in winter, depending on the battery condition and cold temperature, the car battery may be discharged due to the nature of the battery. If the battery has been used for more than 2-3 years, please replace the car battery for safe use.

Q My car was discharged even though I installed the dash cam with a constant power cable.

A First of all, you need to make sure if the fuse cable connections are installed correctly according to the instructions. Home users may not be accustomed to hardwired compared to cigar jack cables. ACC (red) should be connected to a fuse that is powered when the car engine is turned on. VCC (= B +) (Yellow) should be connected to a fuse that retains power even when the car engine is off. GND (black) should be connected to a bolt that makes physical contact with the metal surface around the fuse box. Plus, you need to check the battery life. An aging battery will affect the battery level. If the problem persists even after testing using both methods, please contact the seller or manufacturer's customer service center.

Q

Is dash cam used with AC adapter?

A

Our products are only for car and it is not available to use with AC adapter.

Q

Dash cam is suddenly power off while driving.

A

Users who are using a dash cam with a constant power cable often struggle with this kind of issue. This problem is considered that a dashcam takeovers a voltage from the car battery. Especially in the winter season, there is more chance for discharge as frequently using a heater, extended usage time of headlamp, fog light, and navigation.

Q

There is noise in the recordings.

A

Dash cam records any sound in your vehicle by amplifying the sound for better recordings. Even if it seems there is no sound around the camera, a few noises may be recorded. Please be aware that it is operating normally. If the sound cannot be recognized due to noise, you should contact the seller or manufacturer.

Q The dash cam doesn't turn on at all.

A [Using Cigar jack Cigarette cable]

- a. Please make sure if cigar jack cable is correctly working or not.
- b. Confirm that power socket of cigar cable is correctly connected.
- c. Please check cigar jack is correctly placed on AC terminal.
- d. If dash cam doesn't work after firmware update, it is caused by update failure which case need to be sent to customer service center.

[Using Fuse cable/ OBD power cable]

- a. If input voltage goes down below LBP(lower battery protection) value setting, dash cam interrupt power itself to protect car's battery.
- b. Please check dash cam operation after turn on car and charge car battery.

Q Voice is not recorded.

A If the voice recording is not working properly, please check the feature in the Gnet App and the Viewer whether its function is off. If the function is on but you cannot hear any sounds, the speaker is probably damaged.

In the case of LCD model dashcams, you can change the function by touching the LCD screen without using the App or the viewer.

Q

Why user should use genuine memory card.

A

Each manufacturer's memory card has a different NAND flash and an internal controller. Our genuine memory cards have not only been tested in multiple test environments for many years but are also best compatible with our products.

A memory card is an important storage device and must be powerful enough to read and write data every few seconds during operation.

Normal operation and warranty service cannot be guaranteed when using dash cams with other brands of memory cards.

Q

The voice repeats from the camera.

A

If you have any trouble with voice guidance repeated, take out the memory card and insert it into your PC to format the SD card to check if the SD card has a fault. For the safe use of the device, users should check the memory card every two weeks.



How to use products stably.



1. Keep the dash cam lens clean regularly. Fingerprint and dust on the lens are some of the problems that cause blurred video quality.
2. Make sure your dash cam is working properly.
It may not perform well due to some errors such as a bad memory card or a bad connection with the cigar jack.
3. Check and format the memory card once a week if the user uses a constant power cable.
 - Basically, our products support a format-free function for a user's convenience. But, it may strain memory cards while it is reading/ writing. Also, the error can occur due to excessive file operation on the memory card.
4. Please separate the power jack when you do not use a car for a long time.
 - The standby power consumption when the car engine is off will cause the complete car battery drain.



How long is the warranty period?



The warranty period for GNET Dash camera is one year from the date of purchase.

※ The warranty period for accessories and Micro SD card : 3 months

WARRANTY CARD

Product	GNET Dash cam		Model	G-ON2
Serial Number			Purchasing Date	
Consumer Information	Name		Tel	
	Address			
Seller / Vendor			Tel	
Warranty Period	Dash Camera : 1 Year Micro SD card : 3 months			

Q

What is the password of Wi-Fi ?

A

1. Turn on Wi-Fi function of smartphone
2. Select the "GNET_BB_XXXX" in the list
3. Write [qwertyuiop] in the password blank and touch the join button.
4. Press the Wi-Fi registration button of the dash camera

Cancel	Enter Password	Join
Password	qwertyuiop	

***Caution:** Be aware if you press the Wi-Fi button for more than 10 seconds on the dash cam, it will start the factory initialization. So don't press it for more than 10 seconds unless you want to set it as default.

Q

If I download a video on my smartphone, where can I find it?

A

It is different system depends on the manufacture.

- A. Samsung : My file → Device Internal storage → DCIM → GNET
 - B. LG : File management → All files (or Internal storage → DCIM → GNET)
 - C. I-phone : Camera roll(in the picture app)
- If you can not find the files, Search for "DCIM" folder on your smartphone

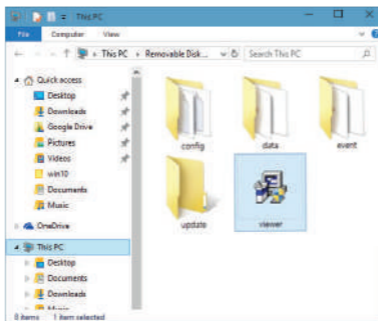
Q

Where can I download the GNET PC Viewer?

A

Dash camera will automatically save the viewer program installation file in the Micro SD Card when it is first booted (when a formatted SD card is loaded).

- (1) When first use, insert the GNET Micro SD card to front camera
- (2) And connect the power cable
- (3) Takes 3-5 min to initialize and create the file system when first use.
- (4) After finished, insert the GNET Micro SD card into the PC
- (5) Run the "GNET PC VIEWER. EXE" program which is saved.
- (6) When the installation is completed, the program runs automatically and GNET icon will be created on your PC.

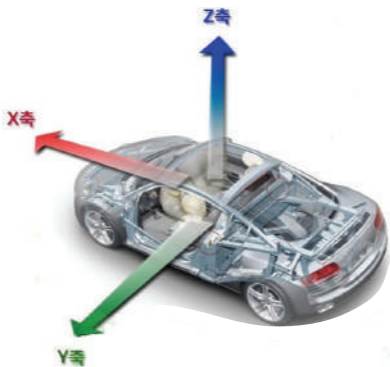


Q

What is the G-Sensor?

A

G sensor (Gravity Sensor), is a sensor that recognizes movement or tilting of an object due to gravitational action of the Earth.

**X axis:**

Front and rear shock and acceleration (+) and deceleration (-) are shown in red.

Y axis:

On the left (+) and right (-) sides, the impact and left/right movement (turn left, turn right) are shown in green.

Z axis:

The top (sky +) and bottom (ground -) impacts are shown in blue.



What is the LBP?



LBP stands for Low Battery Protector, which checks the voltage of the car battery in real-time to prevent the car battery from discharging by turning off the dashcam at low voltage. The purpose is to save the minimum power of the vehicle battery to be able to start the vehicle.

It can be set in 5 steps of 11.3V, 11.5V, 11.8V, 12V, 12.3V in the LBP voltage management system, and the dashcamera turns off when it is below the threshold value for 5 minutes.

	Configurable voltage (V)				
Power OFF	11.3V	11.5V	11.8V	12V	12.3V

Q What is the Parking mode ?

A Parking mode means the dashcam records and stores videos when the vehicle is not being driven for a long time. In the case of using a 3-wire constant power cable, if the ACC power cuts off after parking which means you turn off your vehicle, it enters the parking mode immediately. Entering parking mode, the dashcamera recording frame (FPS) is automatically changed from 30FPS to 10FPS to minimize unnecessary recording time. In other words, parking mode can record up to 3 times more than normal (driving) mode.

Q What is the Smart Motion Detection?

A During parking:
When parking mode is on, the dashcam records at 10 fps.
When parking mode is off, the dashcam records at 30fps.

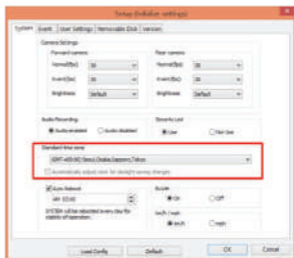
When parking mode is on and motion detection is OFF, the dashcamera continues recording at 10fps. When both parking mode and motion detection are on, the dashcamera will start recording at 10fps only when motion is detected.

Q

How can I change the time of device without LCD screen ?

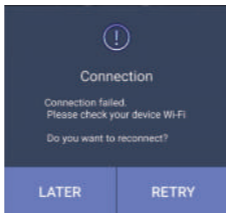
A

In PC VIEWER, you can enter the **Setting > System > Time** Setting as below



Q My smartphone can not be connected with dashboard camera.

A Depending on your smartphone settings, some smartphones may lose connection due to a weak internet signal. This is not a problem with the product or the smartphone application. Please refer to the solution below.



How to solve the problem - [samsung]

1. Smart Network Switch allows you to stay connected by switching to an available cellular data source whenever your Wi-Fi connection becomes unstable.
 - 1) Swipe down from the top of the screen to bring down the notification panel.
 - 2) Open the [Settings] and select [Connections].
 - 4) Select Wi-Fi
 - 5) Tap on [Advanced] at the top right of the screen.
 - 5) Select the toggle next to Smart Network Switch to enable the function.
 - 6) Once the function is activated, you can also enable Aggressive Switching, which allows the network connection to switch over from Wi-Fi to mobile data when your Wi-Fi connection is only slightly unstable.
- ※ Occasionally, the smartphone and dashcamera may not be connected due to insufficient memory of the smartphone. If you are still unable to connect after completing the above methods, clear the memory of your smartphone or close all running applications.

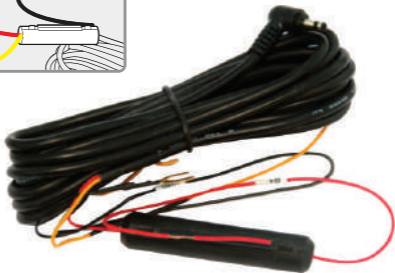
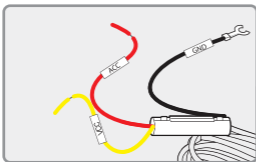
Q How to use direct power cable (3 Wired Type)

A * Black cable : Ground

* Red cable : ACC

(Power source on when key ignition is in accessories or ON position.)

* Yellow cable : VCC (Continued power source.)



1. For the continuous recording even when the ignition is turned off,
please refer to each cable below.

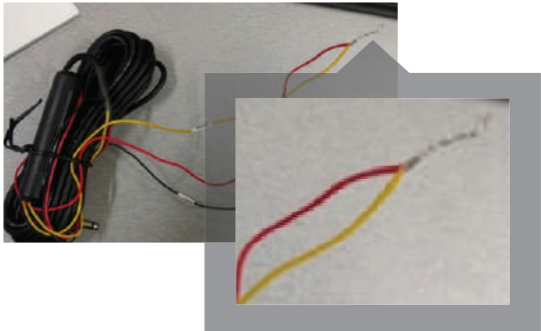
Black cable(Ground) should be connected to the ground on a car.

Yellow cable(VCC) should be connected continued the power supply of a fuse in the fuse box. (ex : Emergency light, Hazardous light, Door lock, etc)

Red cable (ACC) should be connected to power supply of a fuse which is operated when turning on ignition (ex : cigar light fuse, etc)

2. If you do not want to record when the ignition is turned off, please refer to below.

Black Cable (Ground) should be connected to the ground of the car.
Twist Yellow Cable (VCC) with the red cable (ACC) as shown below.



These twisted cables should connect to the power supply of a fuse which is operated when turning on the ignition. (ex : cigar light fuse, etc)



No power (no boot)



1. Check whether the power is supplied even after starting the car-> Check the normal operation (Setting → Power management → Check the power off voltage) → The power was cut off by operating LBP.
 2. Unplug the power jack and plug it back in. → If it is normal after inserting the jack again → If the problem persists, send the problematic dashcam to GNET. .
-



Video input error



- After checking whether the front camera or the rear camera is unstable due to a bad image sensor, send the dashcam in question to GNET.



SD card damage



After power on/off, check the operation status, reinsert the SD card, check the operation status, and verify that the real-time camera image is normal. It is related to the life of the SD card. If you experience the same symptoms afterward, contact us to confirm the time of use and receive the replacement within 3 months. If you can not find a live- video, contact GNET.



SD card recognition failure



Check whether the PC is recognized or not, check the operation after reinserting the SD card, contact us for usage time, and receive a replacement product within 3 months.



When the battery power is off and the power is turned off



1. Normal operation

1) Check the type of power cable

1ch models : GN700, G-BLACK

2ch models : G-ON, G-ON2, N2, X2, L2, GDR, IRONMAN, MATMAN, GK,
G-STYX, N2I, N2T, X2I, X2T

3ch models : G-ON3, G-STYX, X3I, GT700 3CH

4ch models : CP440, GT700 4CH

2)Description of LBP



Vehicle battery discharge



1. Check the cable connection.
2. Check whether it is a 2-wire or a 3-wire type. (2-wire type does not apply to items ② and ③ below.)
3. Cause of discharge
 - ① In winter, the cold weather weakens the vehicle's battery performance, and short driving times can cause the vehicle to discharge.
It prepares for discharge by activating the LBP function being symbiotic with the car battery.
 - ② Setup → Voltage Management → LBP → LBP On Setup → Winter LBP Off Enable → Set LBP Cutoff Voltage to 12.3V
 - ③ If the above setting is still blocked, Voltage Management → Auto Off → Set 3 hours.
 - ④ It is recommended to connect the power cable to the ACC.

Turn off your device if you need to park for more than 24 hours.
Even when LBP is set, the battery may drain during long-term parking.



Recovery Inquiry



1. Video that has been stored for a long time is overwritten, making it difficult to restore.
2. If the user checked the SD card on the computer and accidentally deleted the jdf file from the data/events folder (or for any reason), insert the SD into the device and boot -> Recovery.
 - ※ If you format SD, it can't be recovered.
 - ※ If you press the Wi-Fi button for registration standby mode for more than 10 seconds, data in the SD card may be deleted turning into the factory initialization.

WARRANTY CARD

Product	GNET Dash cam	Model	G-ON2
Serial Number		Purchasing Date	
Consumer Information	Name	Tel	
	Address		
Seller / Vendor		Tel	
Warranty Period	Dash Camera : 1 Year Micro SD card : 3 months		

* If you require product repair, service and/or support, please contact your local seller or send us an email: info@gnetsystem.com



www.gnetsystem.com/eng

6F Lotte IT Castle II Gasan Digital 2ro 98,

Geumcheon-gu, Seoul, Korea

info@gnetsystem.com

